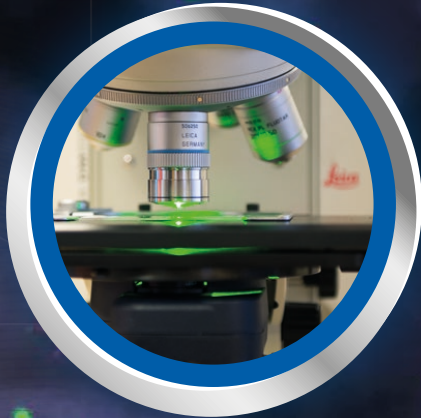


# KREATECH

## FISH PROBES FOR BOND



FULLY  
AUTOMATED  
FISH PROBES  
FOR BOND



Advancing Cancer Diagnostics  
Improving Lives

*Leica*

BIO SYSTEMS

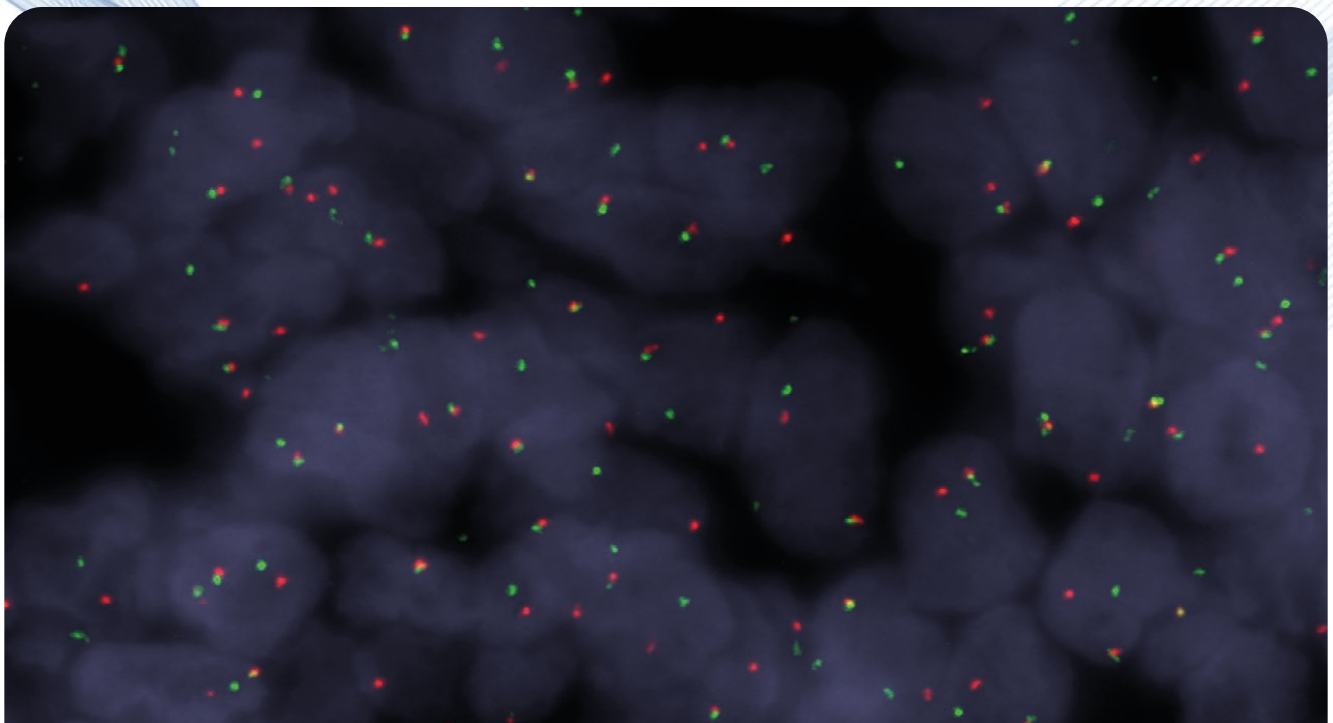
**THIS BROCHURE IS NOT FOR USE IN THE USA**

Main Image: Example of FISH on BOND.

# ADVANCING MOLECULAR TESTING IN CANCER DIAGNOSTICS

Expanding FISH Probes for BOND, a range of fully automated FISH probes for FFPE tissue. Combining the benefits of Kreatech REPEAT-FREE probe technology with the workflow efficiency and reliability provided by BOND fully automated IHC/ISH stainers, the expanded menu of FISH Probes for BOND represents an advancement in automatic FISH testing.

REALIZE THE BENEFITS OF FISH PROBES FOR BOND  
IN YOUR LABORATORY



FISH staining using Kreatech SS18 (18q11) Break- XL FISH Probe

Products in this flyer are subject to regulatory approval. Please consult your Leica Biosystems Sales Representative for availability in your region. For more information on regulatory status and intended use, see the IHC & ISH Product Catalog or product IFUs.





## EASY

Reduce complexity and increase standardization.



## EFFICIENT

Achieve rapid results with minimal hands-on time.



## ACCURATE

Deliver consistent, high-quality staining that supports accurate patient diagnosis.



Products in this flyer are subject to regulatory approval. Please consult your Leica Biosystems Sales Representative for availability in your region. For more information on regulatory status and intended use, see the IHC & ISH Product Catalog or product IFUs.

# EASY

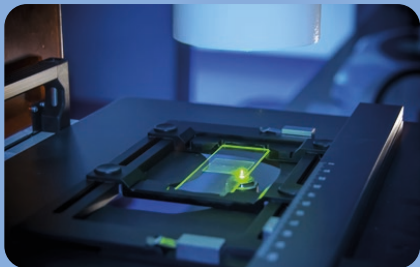
Manual FISH testing is complex and can introduce protocol variation which impairs staining quality. Fully automated FISH testing on BOND increases standardization and delivers reliable results with walk-away convenience.

REDUCE COMPLEXITY AND INCREASE STANDARDIZATION



Products in this flyer are subject to regulatory approval. Please consult your Leica Biosystems Sales Representative for availability in your region. For more information on regulatory status and intended use, see the IHC & ISH Product Catalog or product IFUs.





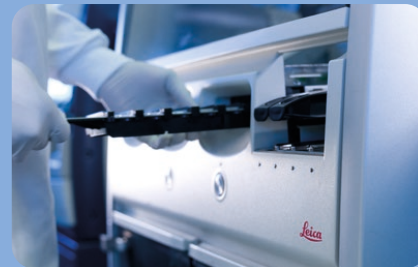
## MINIMIZE REPEATS

Standardized protocols deliver consistent performance, minimizing repeat testing.



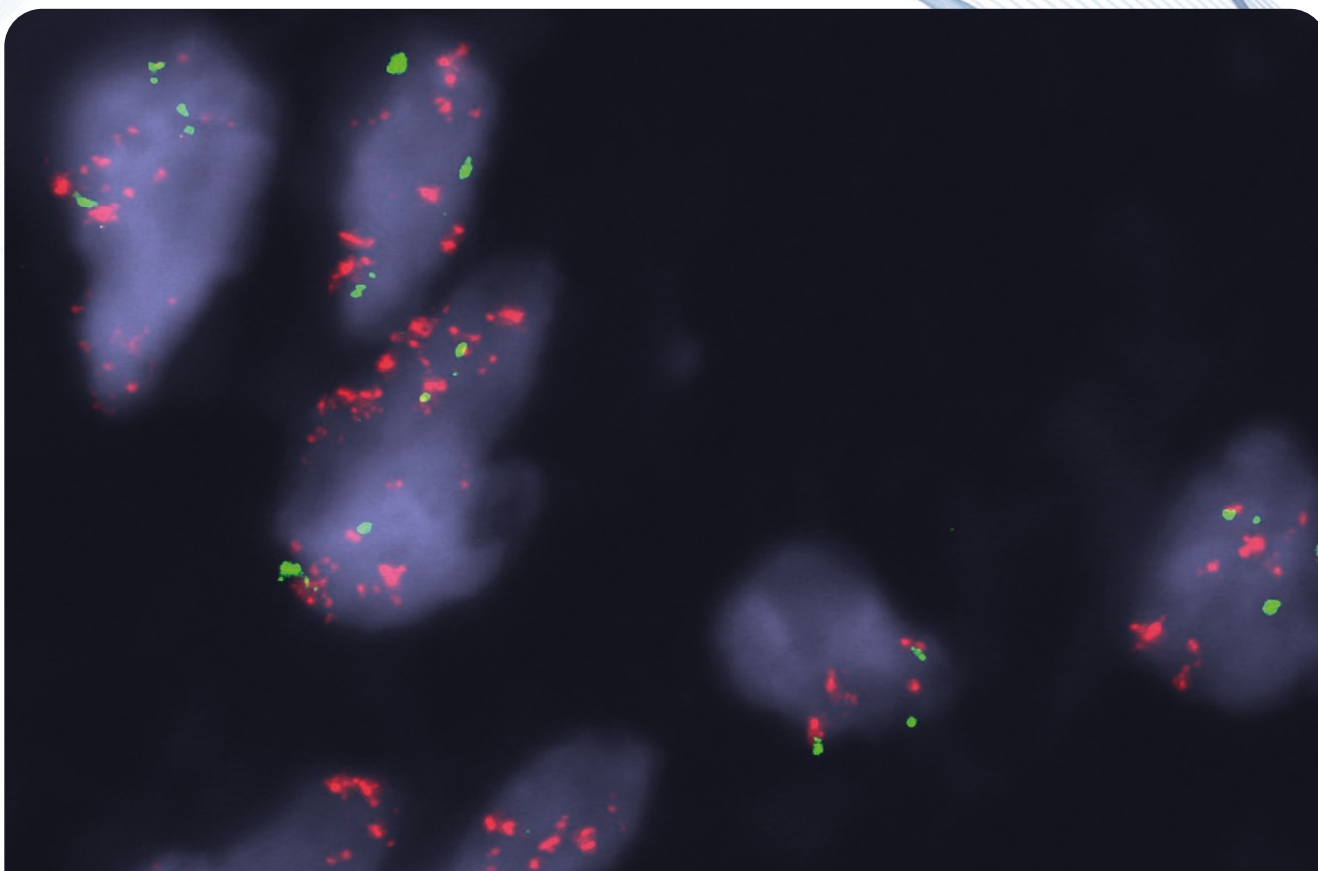
## IMPROVE WORKFLOW

BOND systems automate all steps from dewax to post-hybridization wash, reducing complexity and hands-on time.



## SIMPLIFY FISH TESTING

The BOND instruments and intuitive software make operation simple and straightforward.



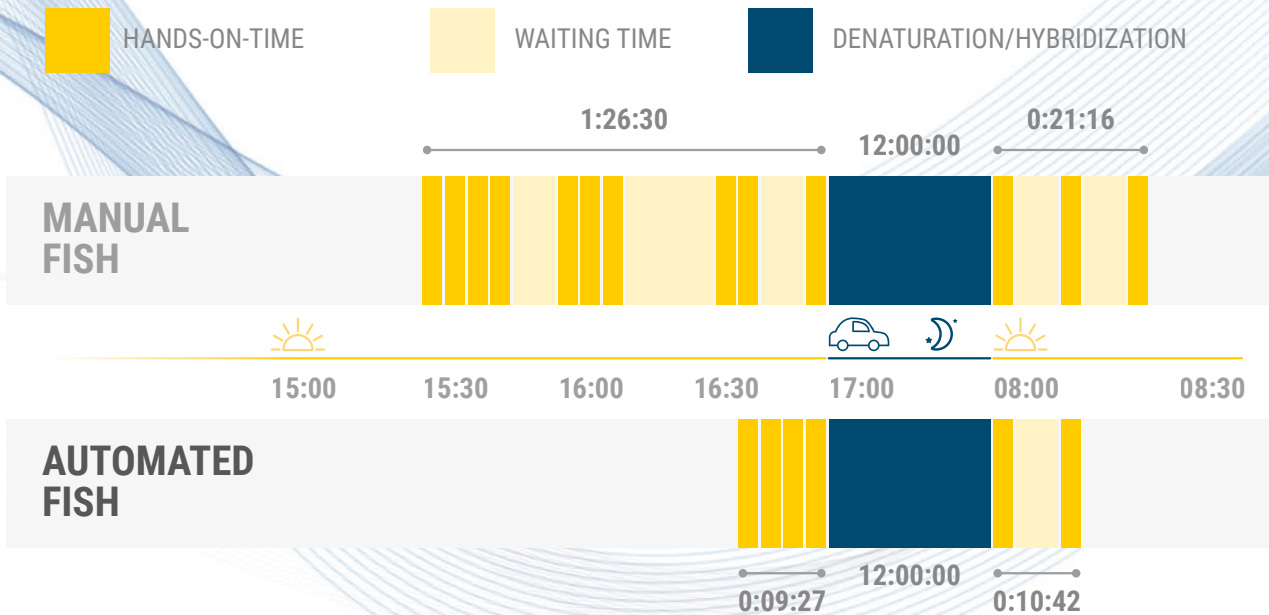
FISH staining using Kreatech MDM2 (12q15) / SE 12 (D12Z3) – XL FISH Probe

Products in this flyer are subject to regulatory approval. Please consult your Leica Biosystems Sales Representative for availability in your region. For more information on regulatory status and intended use, see the IHC & ISH Product Catalog or product IFUs.

# EFFICIENT

Traditional FISH can be time-consuming and labor-intensive, requiring experienced staff for many hours. BOND delivers increased productivity and reliable performance, offering you efficiency improvements without compromising quality.

## DELIVER RAPID RESULTS WITH MINIMAL HANDS ON TIME



Total reduction in hands on time of **81%** (108 mins to 20 mins)

- FISH Probes for BOND can achieve FISH results faster than a typical manual workflow, with minimal hands-on time.
- Patient cases can be continuously processed on the BOND system, as there's no need to batch cases as with manual FISH staining.

Products in this flyer are subject to regulatory approval. Please consult your Leica Biosystems Sales Representative for availability in your region. For more information on regulatory status and intended use, see the IHC & ISH Product Catalog or product IFUs.



## MAXIMIZE USE OF RESOURCES

Automated testing frees up valuable, highly-skilled staff to work on other tasks.



## IMPROVE TURNAROUND TIME

BOND systems facilitate continuous slide processing, which means there is no need to batch slides.



## BE RESPONSIVE

BOND systems perform IHC and ISH at the same time. This provides your laboratory with the flexibility to adapt to changing caseloads.



Products in this flyer are subject to regulatory approval. Please consult your Leica Biosystems Sales Representative for availability in your region. For more information on regulatory status and intended use, see the IHC & ISH Product Catalog or product IFUs.



# ACCURATE

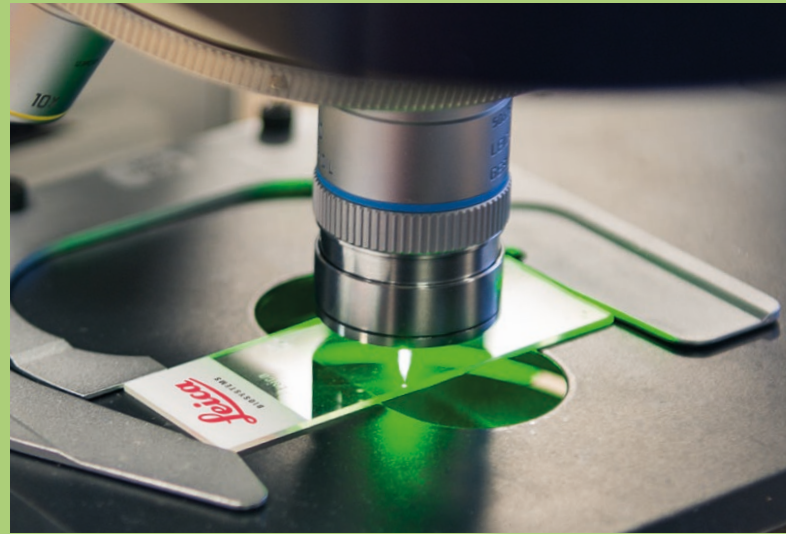
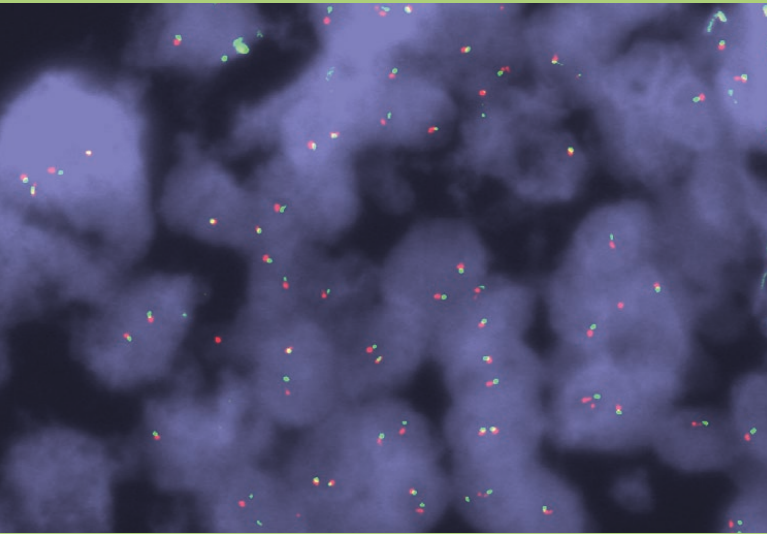
FISH Probes for BOND combine the benefits of advanced probe technology with the consistent quality of the BOND system.

DELIVER CONSISTENT, HIGH-QUALITY STAINING  
THAT SUPPORTS ACCURATE PATIENT DIAGNOSIS



Products in this flyer are subject to regulatory approval. Please consult your Leica Biosystems Sales Representative for availability in your region. For more information on regulatory status and intended use, see the IHC & ISH Product Catalog or product IFUs.





NO COMPROMISE  
BOND systems can perform  
simultaneous FISH, CISH and  
IHC without compromise to  
turnaround time.



Products in this flyer are subject to regulatory approval. Please consult your Leica Biosystems Sales Representative for availability in your region.  
For more information on regulatory status and intended use, see the IHC & ISH Product Catalog or product IFUs.

# BOND FISH KIT

- Enables FISH on the BOND system
- Provides post-hybridization wash step
- Number of tests: 60
- Product code: DS9636

## ANCILLARIES AND CONSUMABLES FOR FISH ON BOND

PRODUCT CODE	PRODUCT NAME	ROLE	PACK SIZE
DS9636	BOND FISH Kit	Enables FISH to be performed on the BOND and provides post-hybridization wash step.	60 tests
AR9037	BOND Hybridization solution	Used for the dilution of individual in situ hybridization (ISH) probes for use on automated BOND system.	100 mL
LK-095A	DAPI 0.1 µg/mL	Used as a counterstain for chromosomes.	1 mL
LK-096A	DAPI 1 µg/mL	Used as a counterstain for chromosomes.	1 mL
LK-097A	Counterstain Diluent	Used as an antifade solution, which helps preserving the fluorescence signal.	1 mL
OP309700	BOND Open Containers 30 mL	BOND reagent container for probe; holds up to 30 mL. May be refilled (maximum total volume 40 mL).	10 containers
OP79193	BOND Open Containers 7 mL	BOND reagent container for probe; holds up to 7 mL. May be refilled (maximum total volume 40 mL).	10 containers
OPT9049	BOND Titration Kit	BOND reagent container for probe, with removable inserts; holds up to 6 mL. May be refilled (maximum total volume 40 mL). Useful during protocol optimization.	10 titration containers and 50 inserts
OPT9719	BOND Titration Container Inserts	Used with titration containers should additional removable inserts be required.	50 inserts

Products in this flyer are subject to regulatory approval. Please consult your Leica Biosystems Sales Representative for availability in your region. For more information on regulatory status and intended use, see the IHC & ISH Product Catalog or product IFUs.

## CE-IVD XL FISH PROBES FOR BOND

PRODUCT CODE	PROBE NAME		PATHOLOGY
KBI-XL001	ALK (2p23) Break – XL for BOND		LUNG PATHOLOGY
KBI-XL002	ROS1 (6q22) Break – XL for BOND		LUNG PATHOLOGY
KBI-XL003	MET (7q31) / SE 7 (D7Z1) – XL for BOND		LUNG PATHOLOGY
KBI-XL004	FGFR1 (8p11) / SE 8 (D8Z1) – XL for BOND		LUNG PATHOLOGY
KBI-XL005	RET (10q11) Break – XL for BOND		LUNG PATHOLOGY
KBI-XL011	EGFR (7p11) / SE7 (D7Z1) – XL for BOND	NEW	LUNG PATHOLOGY
KBI-XL012	NTRK1 (1q23) Break – XL for BOND	NEW	LUNG PATHOLOGY
KBI-XL006	MYC (8q24) Break – XL for BOND		HEMATOPATHOLOGY
KBI-XL007	IGH (14q32) Break – XL for BOND		HEMATOPATHOLOGY
KBI-XL008	BCL2 (18q21) Break – XL for BOND		HEMATOPATHOLOGY
KBI-XL009	BCL6 (3q27) Break – XL for BOND		HEMATOPATHOLOGY
KBI-XL010	TP53 (17p13) / SE 17 – XL for BOND		HEMATOPATHOLOGY
KBI-XL013	CCND1 (11q13) Break – XL for BOND	NEW	HEMATOPATHOLOGY
KBI-XL014	MDM2 (12q15) / SE 12 (D12Z3) – XL for BOND	NEW	SOFT TISSUE PATHOLOGY
KBI-XL015	DDIT3 (12q13) Break – XL for BOND	NEW	SOFT TISSUE PATHOLOGY
KBI-XL016	FOXO1 (13q14) Break – XL for BOND	NEW	SOFT TISSUE PATHOLOGY
KBI-XL017	FUS (16p11) Break – XL for BOND	NEW	SOFT TISSUE PATHOLOGY
KBI-XL018	SS18 (18q11) Break – XL for BOND	NEW	SOFT TISSUE PATHOLOGY
KBI-XL019	EWSR1 (22q12) Break – XL for BOND	NEW	SOFT TISSUE PATHOLOGY

DISCLAIMER: For In Vitro Diagnostic Use Only.

Products in this flyer are subject to regulatory approval. Please consult your Leica Biosystems Sales Representative for availability in your region. For more information on regulatory status and intended use, see the IHC & ISH Product Catalog or product IFUs.

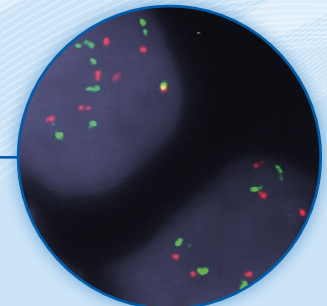




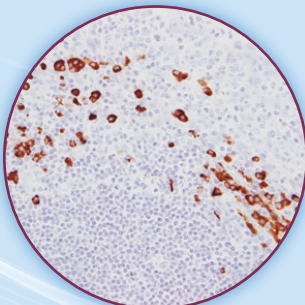
**BOND DETECTION**



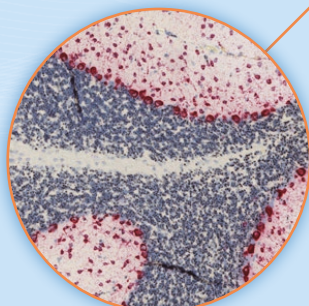
**BOND ANCILLARIES**



**FISH PROBES**

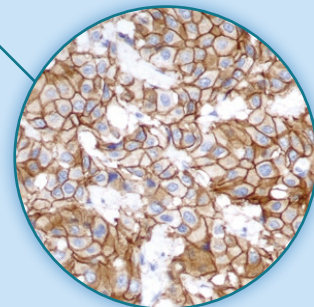


**CISH PROBES**



**RNA ISH PROBES**

**LEICA  
BIO SYSTEMS**  
ADVANCED  
STAINING  
SOLUTION



**ANTIBODIES**

Leica Biosystems is an international company with a strong network of worldwide customer services. For detailed contact information on your nearest sales office or distributor please visit our website: [LeicaBiosystems.com](http://LeicaBiosystems.com)

Leica Biosystems is a global leader in workflow solutions and automation. As the only company to own the workflow from biopsy to diagnosis, we are uniquely positioned to break down the barriers between each of these steps. Our mission of "Advancing Cancer Diagnostics, Improving Lives" is at the heart of our corporate culture. Our easy-to-use and consistently reliable offerings help improve workflow efficiency and diagnostic confidence. The company is represented in over 100 countries. It has manufacturing facilities in 9 countries, sales and service organizations in 19 countries, and an international network of dealers. The company is headquartered in Nussloch, Germany. Visit [LeicaBiosystems.com](http://LeicaBiosystems.com) for more information.

FISH probes are produced under an exclusive license from Veridex LLC for its REPEAT-FREE™ technology. FISH probes are labelled with the Leica Biosystems proprietary Universal Linkage System (ULS™).

Copyright © 2022 Leica Biosystems Newcastle Ltd. All rights reserved. LEICA and the Leica Logo are registered trademarks of Leica Microsystems IR GmbH. Kretech and BOND are trademarks of Leica Biosystems and its affiliates. BOND is a trademark of Leica Biosystems Melbourne Pty Ltd. Other logos, product and/or company names might be trademarks of their respective owners.