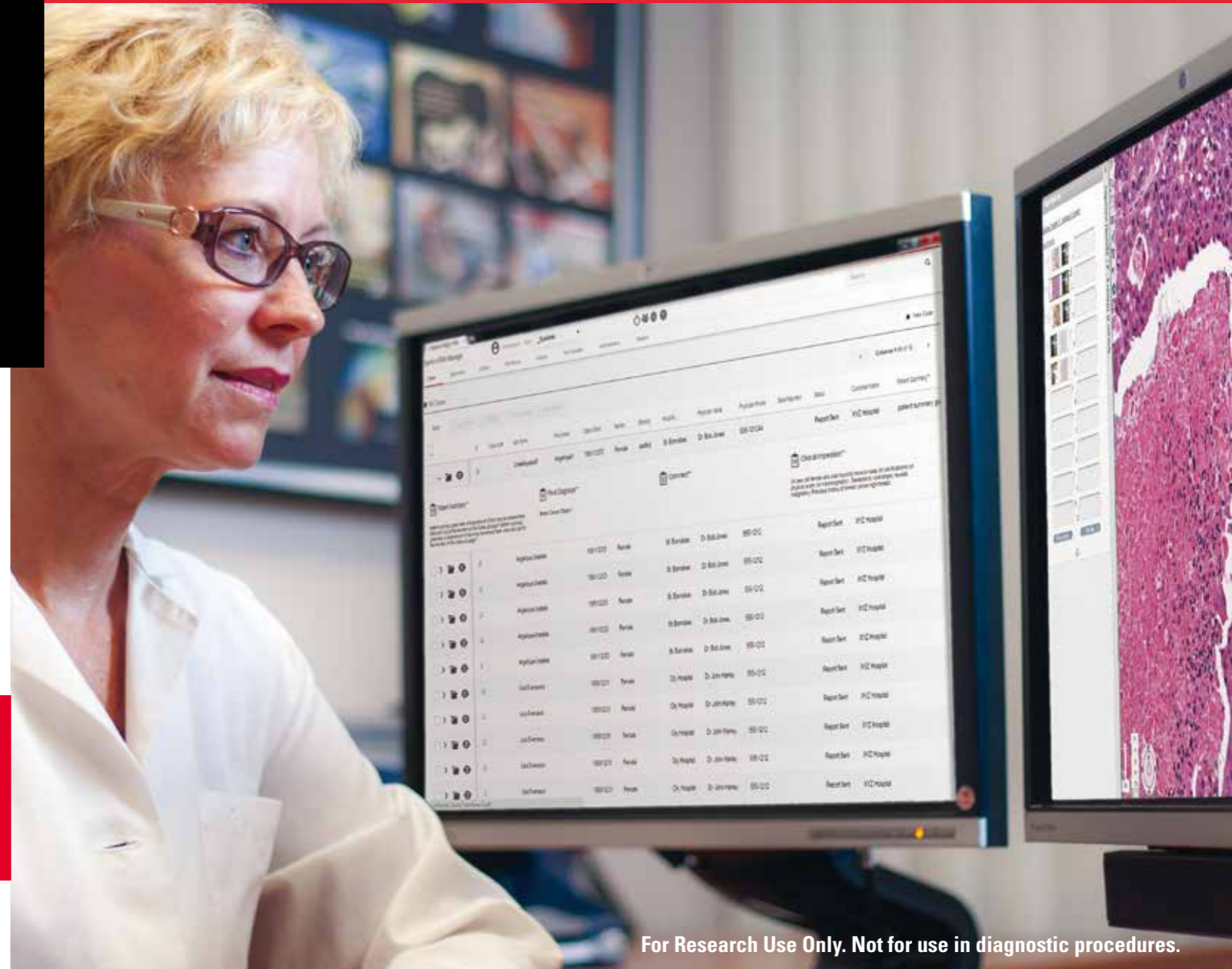


Immunohistochemistry  
 Barcodes  
 Hub & Spoke  
 Antibody  
 Fast  
 Neuropathology  
 Scan Locally, Collaborate Globally  
 Virtual  
 H&E  
 Data  
 Automation  
 News  
 Magnification & Resolution  
 Report  
 Whole Slide Scanners  
 File  
 Format  
 Laboratory Information Systems  
 Stain  
 Glass  
 Slides  
 Capture • Integrate • Analyze • Collaborate  
 Cancer  
 Annotation  
 Server  
 Pathologist  
 IHC  
 Research  
 Lean  
 Global  
 Quantify  
 Hematoxylin & Eosin  
 LIMS/LIS  
 Fluorescence  
 Laboratory  
 Solutions  
 Interpret  
 Anatomic Pathology  
 Specimen  
 Tracking  
 Tissue  
 FISH  
 Archive & Retrieve  
 Compliance  
 DICOM  
 Integrate  
 Microscopy  
 Pathologist  
 Collaborate  
 Pixel  
 Publications  
 Laboratory  
 Solutions  
 Interpret  
 Microtome  
 Leica Biosystems  
 Management  
 Life Sciences  
 Remote  
 Size  
 Coverslip  
 Quality  
 Grossing  
 Education  
 Prostate  
 Digital Pathology  
 Lung  
 Image Analysis  
 Histology  
 Digital Pathology  
 Toxicological Pathology  
 Dermatopathology  
 Workflow Efficiency

# Aperio eSlide Manager

Digital Pathology Management Software



**Aperio**  
ePathology Solutions

Capture



Integrate



Analyze



Collaborate



**LEICA BIOSYSTEMS**

Leica Biosystems is an international company with a strong network of worldwide customer services. For detailed contact information on your nearest sales office or distributor please visit our website:

LeicaBiosystems.com

[LeicaBiosystems.com/Aperio](http://LeicaBiosystems.com/Aperio)

**For Research Use Only.**

**Not for use in diagnostic procedures.**

Copyright © 2017 Leica Biosystems Imaging, Inc. All Rights Reserved. LEICA and the Leica logo are registered trademarks of Leica Microsystems IR GmbH. Aperio is a trademark of the Leica Biosystems group of companies in the USA and optionally in other countries. Other logos, product and/or company names might be trademarks of their respective owners.

95.12978 Rev B - IMC 1106-REV-B 3/2017

For Research Use Only. Not for use in diagnostic procedures.

**Aperio**  
ePathology Solutions

Capture



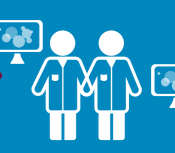
Integrate



Analyze



Collaborate



# Get the right answers faster with powerful software for sharing, viewing and collaboration on histopathology slides.

Aperio eSlide Manager is a comprehensive digital pathology software solution for efficient management of whole slides and integrated case information in a secure, searchable, easy to use system. The flexible, modular design features streamlined workflows specifically developed for the unique needs of pathology. From automated case aggregation and review to remote slide access, Aperio eSlide Manager is the digital pathology solution chosen by thousands of professionals globally.

## SPEED

Instant, online access to your slides

## INTEGRATION

Automatic integration of slides and data via LIS communication

## SECURITY

Peace of mind that sensitive data is fully protected

## Viewers

Quickly access your slides or cases, whether viewing locally at your desktop or remotely, on a computer, smartphone or tablet device. Aperio eSlide Manager viewing options are tailored to deliver optimal performance, no matter which device you choose. The intuitive interface and customized workflows provide a consistently excellent viewing experience.

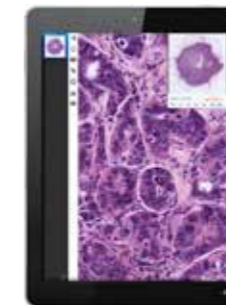
### INTEGRATED WEB VIEWER

Comprehensive workflows and case management via standard browsers



### ePATH VIEWER

Access on the move using iPhone or iPad



### IMAGESCOPE

Client viewer for local or remote image access



## Security

Aperio eSlide Manager features comprehensive data security controls, including:

- » Robust user authentication
- » Encryption of data in transit
- » Electronic signatures
- » Reason for change validation
- » Audit trail functionality

# Networks

In a global environment, connecting remote teams and accessing integrated pathology information is more important than ever.

Aperio eSlide Manager's Hub & Spoke solution facilitates the integration of multiple remote scanning sites into a single networked solution, with rapid, secure access to users globally.

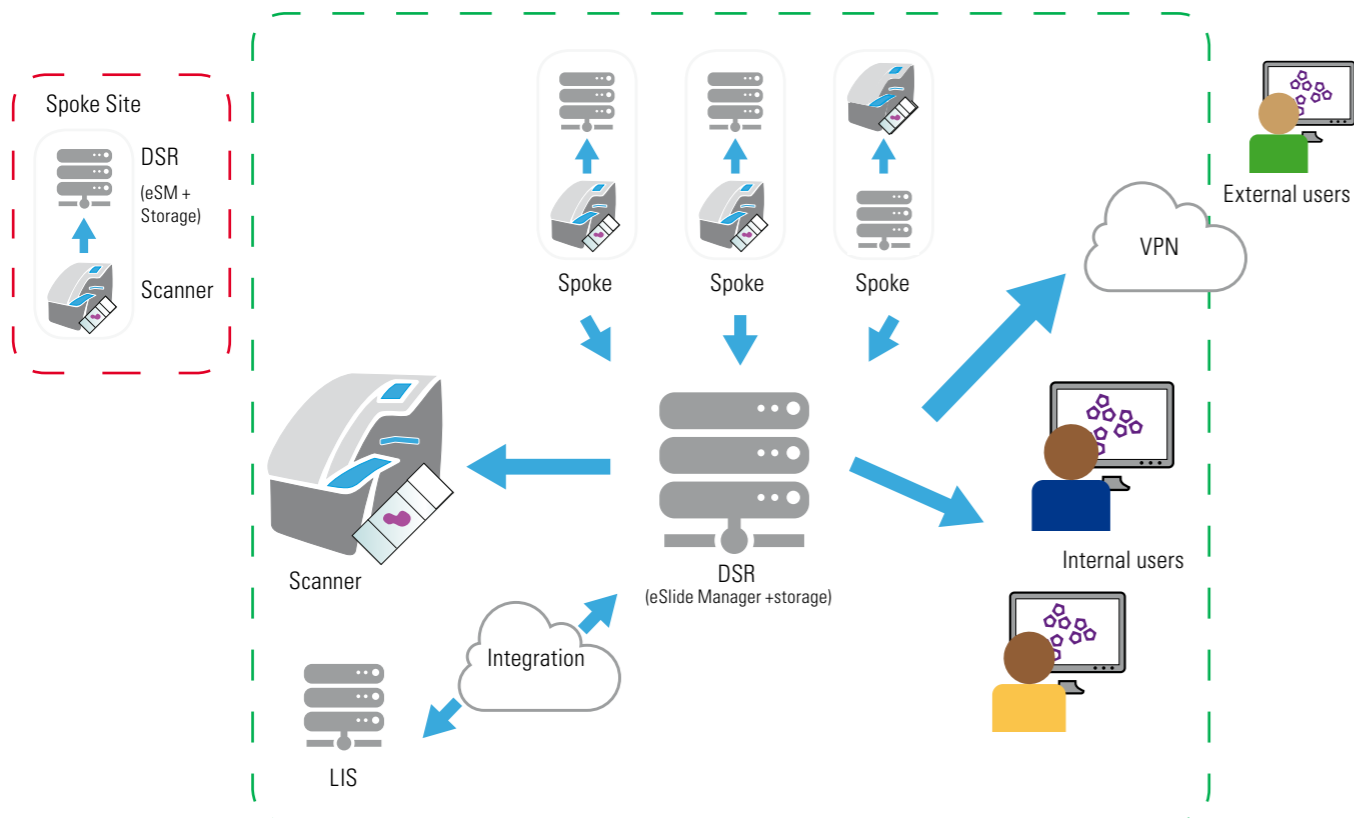
With a proven track record in multisite deployments for national and global projects, Aperio Digital Pathology is a name you can trust.

## LIS INTEGRATION

Turnkey or customized LIS integration options ensure your digital pathology system fits seamlessly into your existing workflow.

## IMPROVED AUTOMATION

Automatic barcode reading facilitates efficient data population from your LIS, reducing manual data entry, thus eliminating typographical errors.



For Research Use Only. Not for use in diagnostic procedures.

# Case review

Aperio eSlide Manager's streamlined case review provides rapid access to pathology cases, reducing the time spent waiting for results and cost of shipping slides. Featuring intuitive tools for histologists and pathologists, Aperio eSlide Manager efficiently presents slides and data in a single, easy to use interface.

Pathologist is instantly notified when a new case is assigned for review.

Bidirectional communications with LIS enable automated read / write of case data and results.

Integrated web viewer can be launched from LIS, and features high resolution display with ergonomic controls.

Barcodes facilitate LIS connectivity, eliminating redundant data entry.

Slide Tray presents all case images in a convenient, easy to use format.

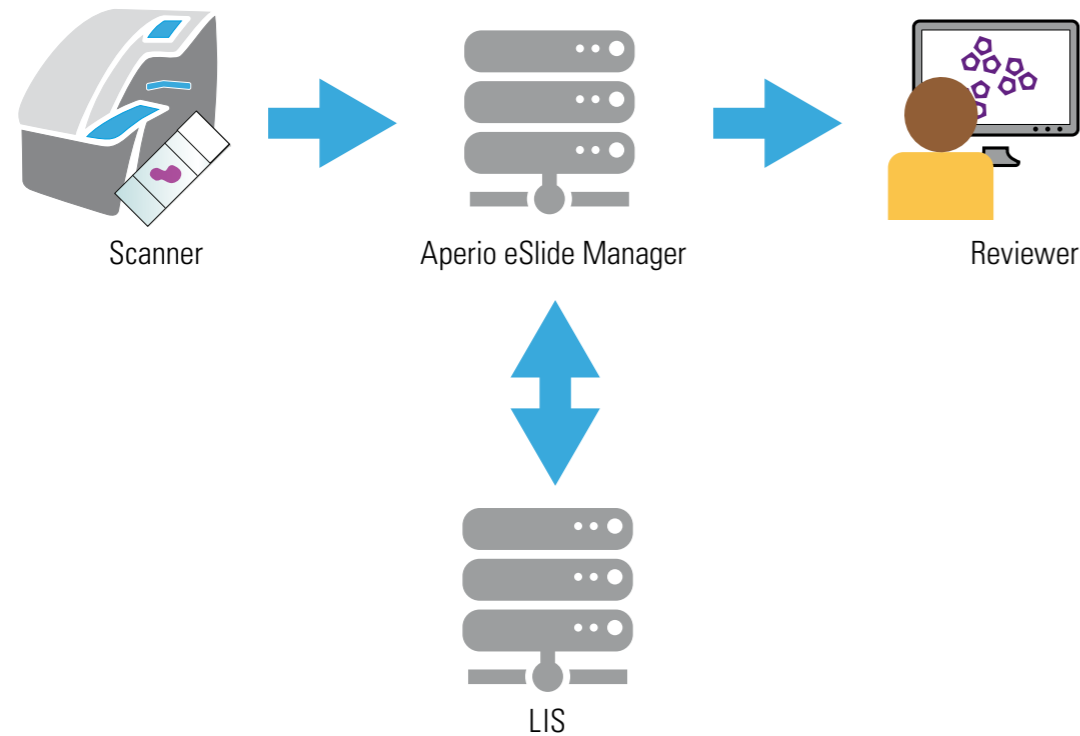
Easily annotate regions for rapid navigation or extract for use in the integrated reporting tools.

For Research Use Only. Not for use in diagnostic procedures.

# LIS integration

Aperio eSlide Manager can be integrated with customer LIS via the Aperio Integration Server. The Integration Server enables bi-directional exchange of information between the customer LIS and Aperio eSlide Manager through a web services interface (SOAP), using industry communication standards such as HL7, XML and MIRTH. Slide barcodes can be utilized for improved automation and reduced manual data input.

Consultation for custom LIS integration is available, as well as turnkey integration with existing commercial LIS solutions.



**1** Slide is scanned & barcode is decoded

**2** Aperio eSlide Manager & LIS data exchange based on barcode

**3** Viewer launched from LIS, including case data

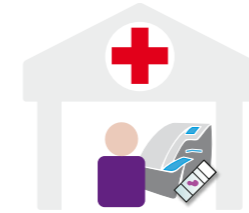
**For Research Use Only. Not for use in diagnostic procedures.**

# Deployment

Aperio eSlide Manager can be deployed locally, in a cloud environment, or in Hub & Spoke configuration. Deployment options are flexible to suit the individual workflows and requirements of your organization, and scalable to grow with your needs.

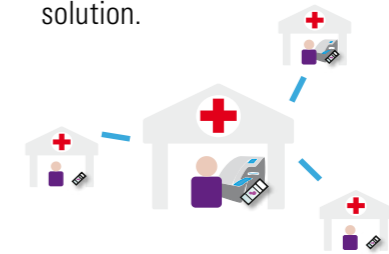
## LOCAL

Solution is deployed on premise, and can connect to a single scanner or multiple scanners on your local network (LAN).



## HUB & SPOKE

Multisite deployment that enables multiple remote Scanning sites on a WAN to connect into a single networked solution.



## CLOUD

Software is deployed on cloud-based server solution maintained by a 3rd party cloud services provider.



## RECOMMENDED SERVER SPECIFICATIONS

CPU Speed	8-core processors 2.0GHz or faster
Hard Disk Space	5TB DAS, NAS or SAN Storage (recommended) RAID for redundancy
Available C: or OS drive space	100GB
Memory	16GB RAM
Network card	Dual 1GB network cards
Power supply	Redundant power supplies
Operating system	Windows Server 2012 R2

## SUPPORTED IMAGE FORMATS

Leica	<ul style="list-style-type: none"> <li>» SVS</li> <li>» SCN (Export from Ariol / Aperio VERSA Scanners)</li> <li>» AFI (Combined Fluorescent image type)</li> </ul>
Hamamatsu	<ul style="list-style-type: none"> <li>» NDPI</li> <li>» VMS (Older format)</li> <li>» VMU (Older format)</li> </ul>
3DHistech	<ul style="list-style-type: none"> <li>» MRXS</li> </ul>
Bacus	<ul style="list-style-type: none"> <li>» CWS</li> </ul>
Standard Formats	<ul style="list-style-type: none"> <li>» TIFF</li> <li>» JFIF (JPEG File Interchange Format, not suitable for very large files)</li> <li>» JPEG 2000</li> <li>» PMM (Portable Pixmap Format)</li> </ul>

**For Research Use Only. Not for use in diagnostic procedures.**