

# Leica IP C and IP S

## Printer Driver Software

For the Windows 8.1 (32/64 bit) and  
Windows 10 (32/64 bit) operating systems

Installation Instructions  
English

**Order No.: 14060282101 - Revision B**

Always keep this manual with the instrument.  
Read carefully before working with the instrument.





The information, numerical data, notes and value judgments contained in this Instructions for Use represent the current state of scientific knowledge and state-of-the-art technology as we understand it following thorough investigation in this field.

We are under no obligation to update the present Instructions for Use periodically and on an ongoing basis according to the latest technical developments, nor to provide our customers with additional copies, updates etc. of this Instructions for Use.

To the extent permitted in accordance with the national legal system as applicable in each individual case, we shall not be held liable for erroneous statements, drawings, technical illustrations etc. contained in this Instructions for Use. In particular, no liability whatsoever is accepted for any financial loss or consequential damage caused by or related to compliance with statements or other information in this Instructions for Use.

Statements, drawings, illustrations and other information regarding the contents or technical details of the present Instructions for Use are not to be considered warranted characteristics of our products.

These are determined only by the contract provisions agreed between ourselves and our customers.

Leica reserves the right to change technical specifications as well as manufacturing processes without prior notice. Only in this way is it possible to continuously improve the technology and manufacturing techniques used in our products.

This document is protected under copyright laws. All copyrights to this documentation are held by Leica Biosystems Nussloch GmbH.

Any reproduction of text and illustrations (or of any parts thereof) by means of print, photocopy, microfiche, web cam or other methods – including any electronic systems and media – requires express prior permission in writing by Leica Biosystems Nussloch GmbH.

For the instrument serial number and year of manufacture, please refer to the nameplate on the back of the instrument.



Leica Biosystems Nussloch GmbH

Heidelberger Str. 17 - 19

69226 Nussloch

Germany

Tel.: +49 - (0) 6224 - 143 0

Fax: +49 - (0) 6224 - 143 268

Web: [www.LeicaBiosystems.com](http://www.LeicaBiosystems.com)

# Table of contents

---

<b>1.</b>	<b>Introduction.....</b>	<b>5</b>
1.1	Symbols and their meanings.....	5
1.2	Overview.....	5
1.3	Area of validity.....	6
1.4	General installation instructions.....	6
<b>2.</b>	<b>How to disable the driver signature enforcement.....</b>	<b>7</b>
2.1	Temporary disabling of the driver signature enforcement.....	7
<b>3.</b>	<b>Uninstalling existing IP printer driver installations.....</b>	<b>10</b>
3.1	Uninstall the existing IP printer driver software.....	10
3.2	Uninstall the IP printer.....	11
3.3	Uninstalling the IP printer driver.....	12
<b>4.</b>	<b>Install the IP printer driver and help files.....</b>	<b>15</b>
4.1	Available printer driver versions for Windows 8.1 and Windows 10.....	15
4.2	Downloading the IP printer driver from the Leica Biosystems website.....	15
4.3	Installing the printer driver.....	15
4.4	Install the printer.....	18
<b>5.</b>	<b>Verify installation.....</b>	<b>23</b>
5.1	Version check.....	23

## 1. Introduction

### 1.1 Symbols and their meanings



#### Warning

Leica Biosystems GmbH assumes no liability for consequential loss or damage due to failure to observe the following instructions, particularly in relation to transportation and package handling, and failure to observe the instructions for handling the instrument carefully.

**Symbol:**



**Title of the symbol:**

Warning

**Description:**

Warnings appear in a box and are marked by a warning triangle.

**Symbol:**



**Title of the symbol:**

Note

**Description:**

Notes, i. e. important user information, appear in box and are marked by an information symbol.

**Symbol:**

→ "Fig. 7 - 1"

**Title of the symbol:**

Item number

**Description:**

Item numbers for numbering illustrations. Numbers in red refer to item numbers in illustrations.

**Symbol:**

Start

**Title of the symbol:**

Function key

**Description:**

Function keys to be pressed on the instrument are displayed as bold, gray and undelined text.

**Symbol:**

Ready

**Title of the symbol:**

Software key and/or Display Messages

**Description:**

Software keys to be pressed on the display and/or messages on the display are displayed as bold, gray text.

### 1.2 Overview

The Leica Biosystems website makes separate, up-to-date drivers for the Leica IP C/IP S printers available for download for the operating systems

- Windows 8.1 (64-bit) and
- Windows 10 (64-bit) operating systems.

These drivers are also available on the CD-ROM accompanying the printed Instructions for Use.

The installation is carried out in four steps:

1. Uninstalling or checking whether any IP printer drivers are preinstalled in the system.
2. Installing the help files for users.
3. Installing and configuring the printer driver.
4. Version check.



## Note

An incomplete installation without, say, help files will not be accepted by the system.

The difference compared to previous drivers is the new help files, which, in the event of an error message, show the user corresponding on-screen instructions. The handling of these files is documented by an integrated help function.



## Note

The previous drivers for Windows XP Version 2.0, Windows Vista Version 2.34 and Windows 7 32-bit Version 2.40 remain in their current state instead of being further updated.

### 1.3 Area of validity

For using the IP C/IP S printers with the Windows 8.1 or Windows 10 (all 32-bit or 64-bit) operating systems, including the new help function.

### 1.4 General installation instructions

#### Requirements

- If necessary, the local IT administrator has to grant the user the needed user rights for installing the printer driver.
- For every printer to be installed, a functional COM port has to be available under the device manager before the installation is carried out.

#### General:



## Note

The IP printer driver and IP C or IP S printer installation is explained in this installation guide only for the Windows 10 operating system. The described procedures are similar on Computer with installed Windows 8.1 operating systems. When using the operating system Windows 8.1, individual menus and windows may differ from those shown here.

## 2. How to disable the driver signature enforcement

### 2.1 Temporary disabling of the driver signature enforcement



#### Note

The Windows **Driver Signature Enforcement** has to be disabled by the user prior the installation of the new driver.

### Disabling the Driver Signature Enforcement

1. Open the **Power Options** menu (→ Fig. 1).
2. Hold the **Shift** key on the keyboard and press **Restart** (→ Fig. 1-1).

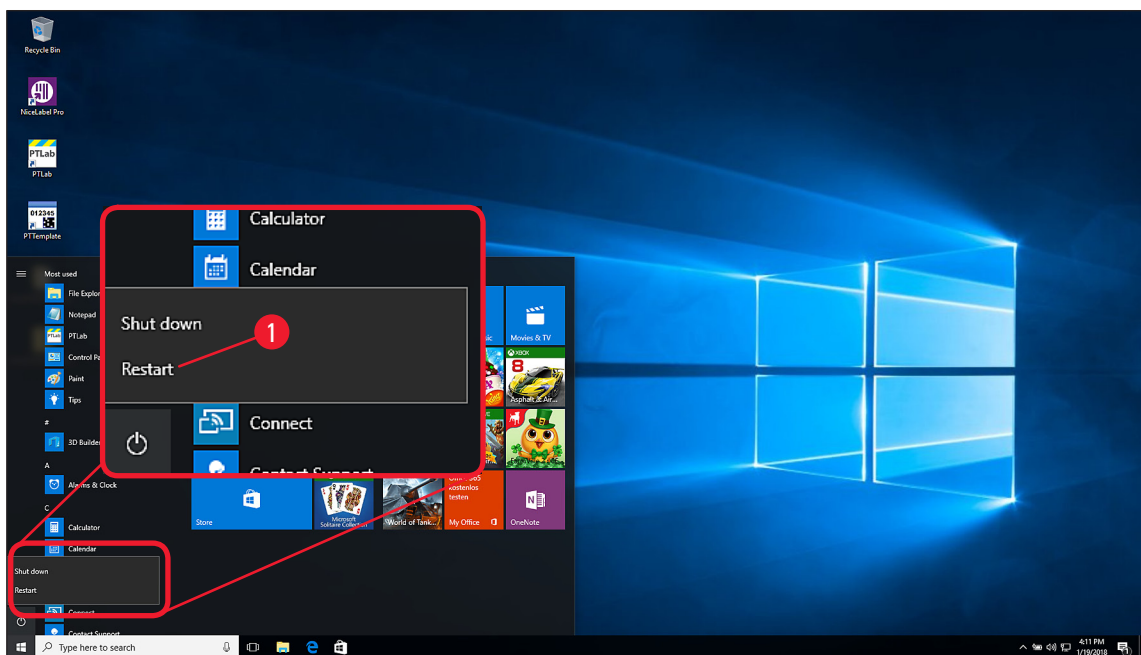


Fig. 1

**Note**

Once the computer has rebooted, the option **Troubleshooting** has to be selected.

3. Click on **Troubleshooting** (→ Fig. 2-1).
4. In the next menu, click on **Advanced options** (→ Fig. 2-2).
5. Select **Startup Settings** (→ Fig. 2-3).
6. Click on **Restart** (→ Fig. 2-4) on the following screen.
7. Press **F7** on the keyboard to disable the **Driver Signature Enforcement** (→ Fig. 2-5).

**Note**

The computer will reboot automatically after pressing **F7**. It is now possible to install unsigned drivers.



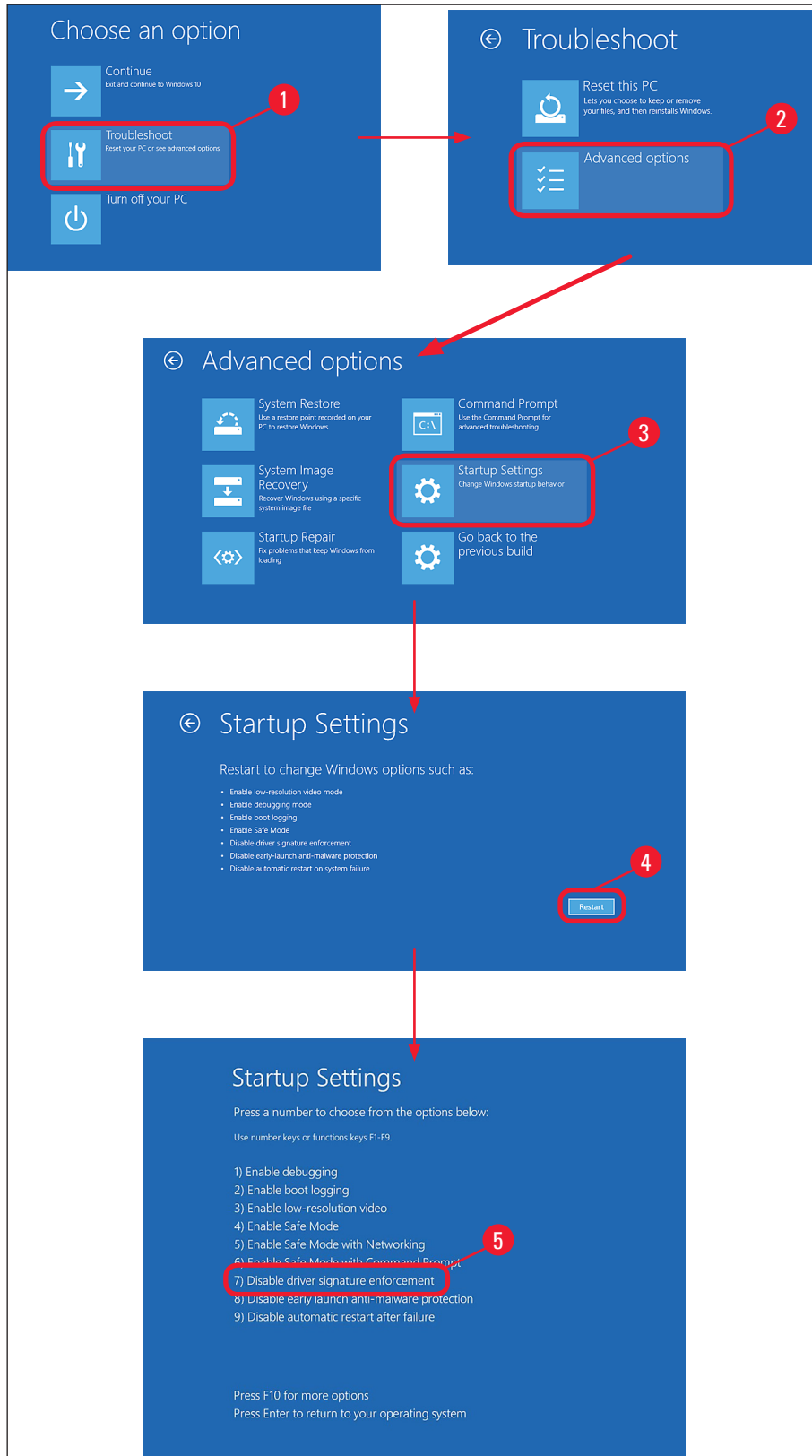


Fig. 2

## 3 Uninstalling existing IP printer driver installations

### 3. Uninstalling existing IP printer driver installations

#### 3.1 Uninstall the existing IP printer driver software

1. Browse to **Control Panel\Programs\Programs and Features** (→ Fig. 3-1).
2. Browse the list of installed programs until you find the **Leica IP Driver** (→ Fig. 3-2).
3. Select the **Leica IP Driver** and click **Uninstall** (→ Fig. 3-3) on the task bar.

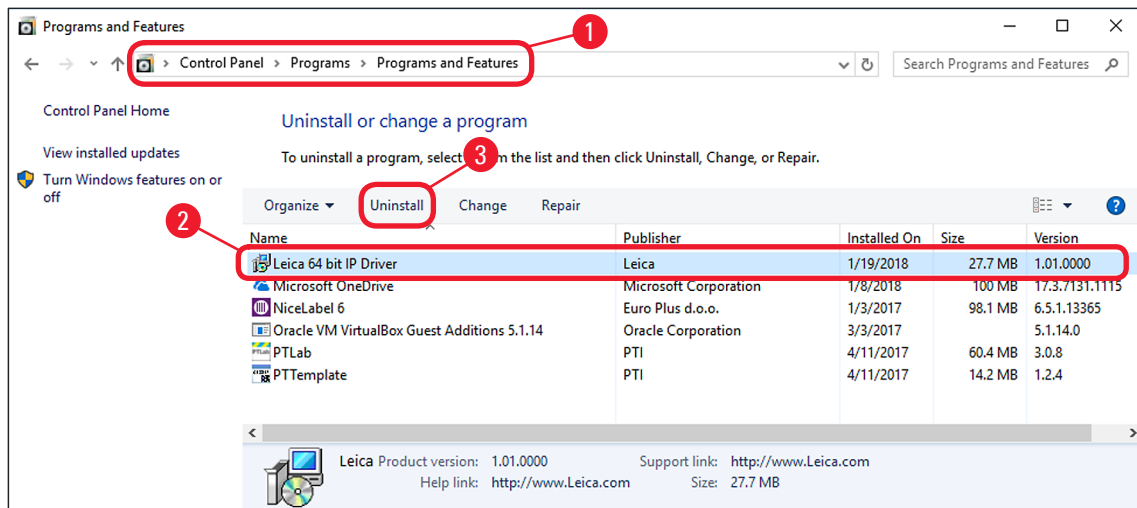


Fig. 3

4. Confirm the system message with **Yes** (→ Fig. 4-1).

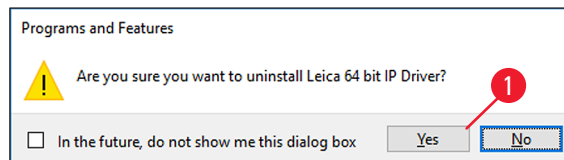


Fig. 4

5. Windows is then preparing to remove the printer driver software (→ Fig. 5).



#### Note

The uninstallation can be canceled by clicking on **Cancel** (→ Fig. 5-1).

6. After the preparation is done, the uninstallation of the IP driver software will be carried out (→ Fig. 5-2).

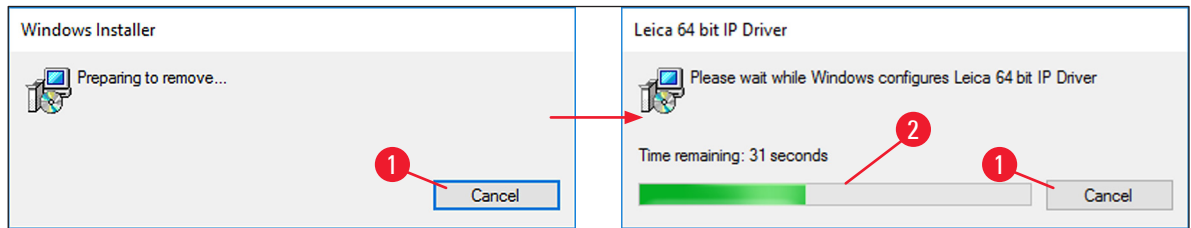


Fig. 5

7. Check in the list of installed programs (→ Fig. 3), if the Leica IP Printer software has been removed.

### 3.2 Uninstall the IP printer

1. Browse to **Control Panel\Hardware and Sound\Devices and Printers** (→ Fig. 6-1).
2. Either right click on the IP Printer (→ Fig. 6-2) to be uninstalled and select **Remove device** (→ Fig. 6-3) or left click on the IP Printer (→ Fig. 6-2) and click **Remove device** on the task line (→ Fig. 6-4).

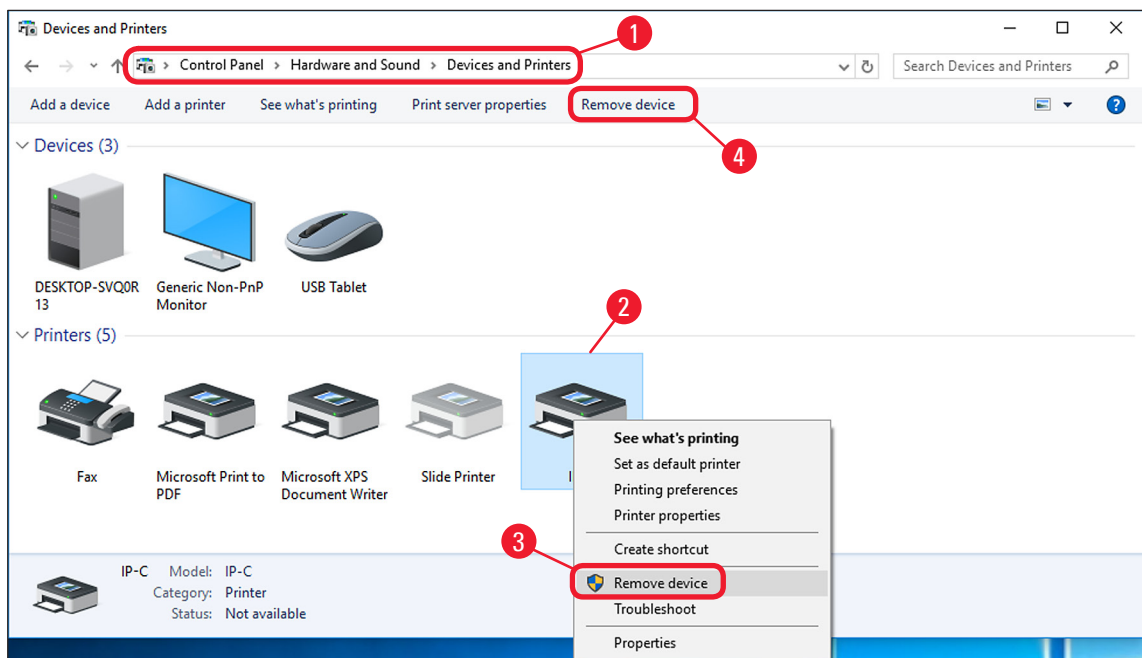


Fig. 6

3. Confirm the system message with **Yes** (→ Fig. 7-1).

## 3 Uninstalling existing IP printer driver installations

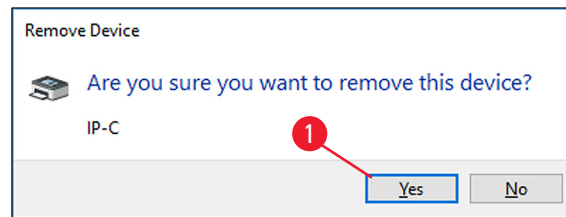


Fig. 7

✓ The IP Printer has been successfully removed.



### Warning

Before proceeding with the next step (→ p. 12 – 3.3 Uninstalling the IP printer driver), close all applications and windows and restart the computer.

### 3.3 Uninstalling the IP printer driver

1. After deleting the printer icon and restarting the computer, any printer, such as **Microsoft XPS** (→ Fig. 8-1), can be selected with the right mouse button.
2. The **Print server properties** menu (→ Fig. 8-2) appears in the system menu bar. Open this menu item by clicking it.

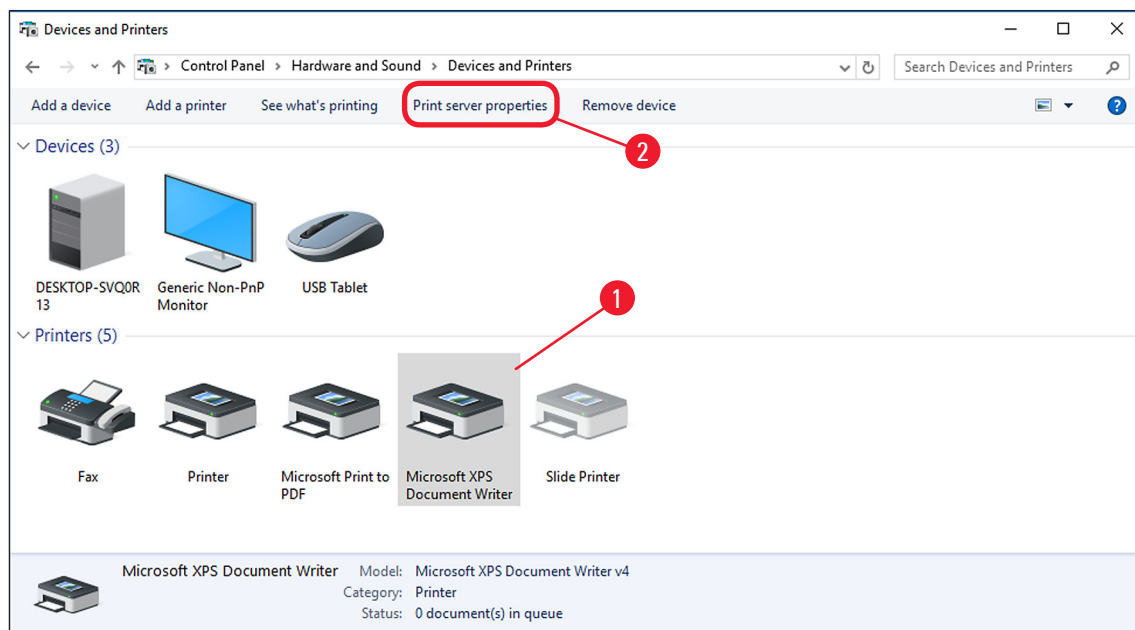


Fig. 8

3. In the **Print Server Properties** menu (→ Fig. 9) select the **Drivers** tab (→ Fig. 9-1) and select the printer driver, for example, IP-C (→ Fig. 9-2).
4. Delete the driver by clicking **Remove...** (→ Fig. 9-3).

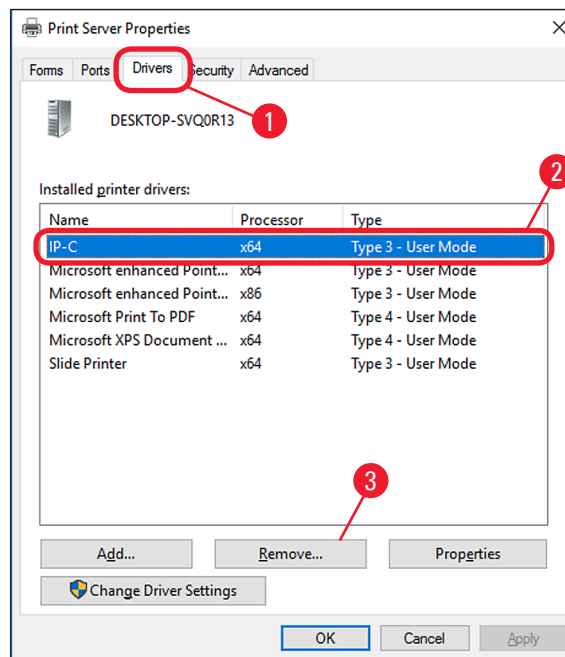


Fig. 9

- To update to a new driver version, **Remove driver and driver package** (→ Fig. 10-2) has to be selected and confirmed with **OK** (→ Fig. 10-3). If only one IP printer is to be removed from among multiple installed IP printers, the selection **Remove driver only** (→ Fig. 10-1) is sufficient.
- Click **Yes** (→ Fig. 10-4) to confirm the system message.

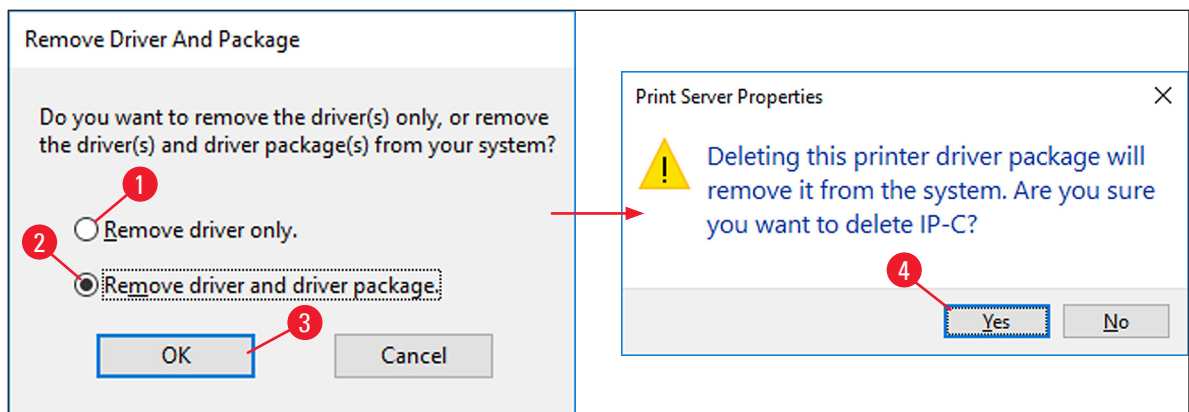


Fig. 10

- Click **Delete** in the following window (→ Fig. 11-1).
- After successful deletion, close this window by clicking **OK** (→ Fig. 11-2).

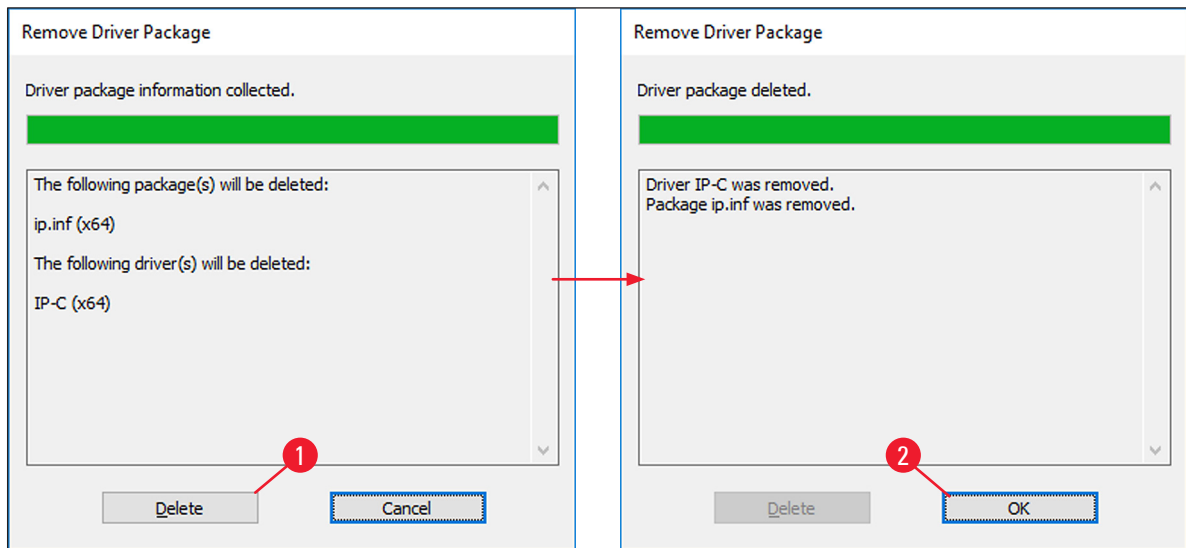


Fig. 11

9. Click **Close** (→ Fig. 12-1) to close the **Print Server Properties** window to finish the uninstallation.

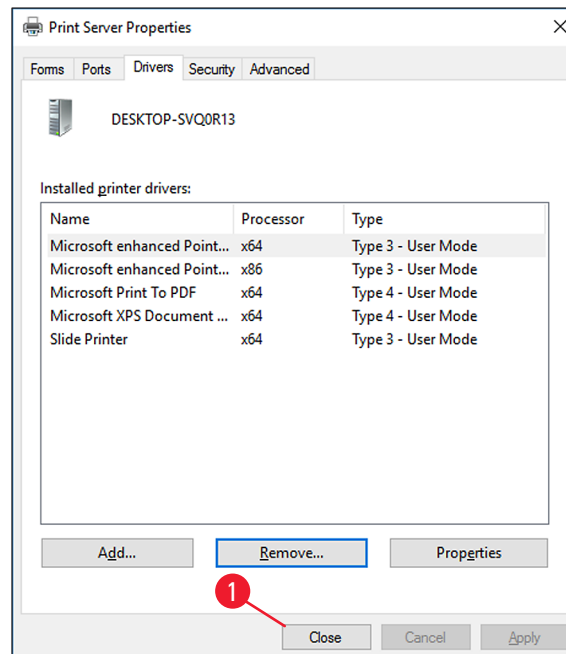


Fig. 12



### Warning

- Close all open windows and restart the computer.
- Before restarting, save your current work to prevent data loss.

## 4. Install the IP printer driver and help files



### Note

The following chapters describe how to install the printer driver, the printer and the help files to the directory **C:\CSPrinter**.

### 4.1 Available printer driver versions for Windows 8.1 and Windows 10

Operating system	Driver version
Windows 8.1 / 32-bit	V3.0
Windows 8.1 / 64-bit	V3.1
Windows 10 / 32-bit	V4.0
Windows 10 / 64-bit	V4.1



### Note

Go to the Leica Biosystems website and download the latest driver file Leica 64-bit IP Driver or Leica 32-bit IP Driver suitable for your operating system or use the corresponding file from the CD accompanying the printed Instructions for Use.

### 4.2 Downloading the IP printer driver from the Leica Biosystems website

1. Open [www.LeicaBiosystems.com](http://www.LeicaBiosystems.com) in your browser and select the **Products** category, select **Specimen Labeling Products**, select either **IP C** or **IP S**,
2. click **Documents** and scroll down to the item **Drivers**,
3. select the driver necessary for your operating system from the drivers available,
4. right-click the corresponding file and select **Save as...**,
5. download the file and save it in a suitable folder on the computer's hard drive.



### Note

A version of the printer driver is also available on the Instructions for Use CD-ROM which is part of the standard scope of delivery of the printer IP C and IP S.

We recommend to always check on [www.LeicaBiosystems.com](http://www.LeicaBiosystems.com) for the most current version of the driver.

### 4.3 Installing the printer driver

1. Browse to the folder on your local hard disc (→ Fig. 13-1) where you have downloaded the printer driver or open the printer driver folder on the CD-ROM.
2. Right click on the **....Driver.exe** file (→ Fig. 13-2) and select **Run as administrator** (→ Fig. 13-3).

## 4 Install the IP printer driver and help files

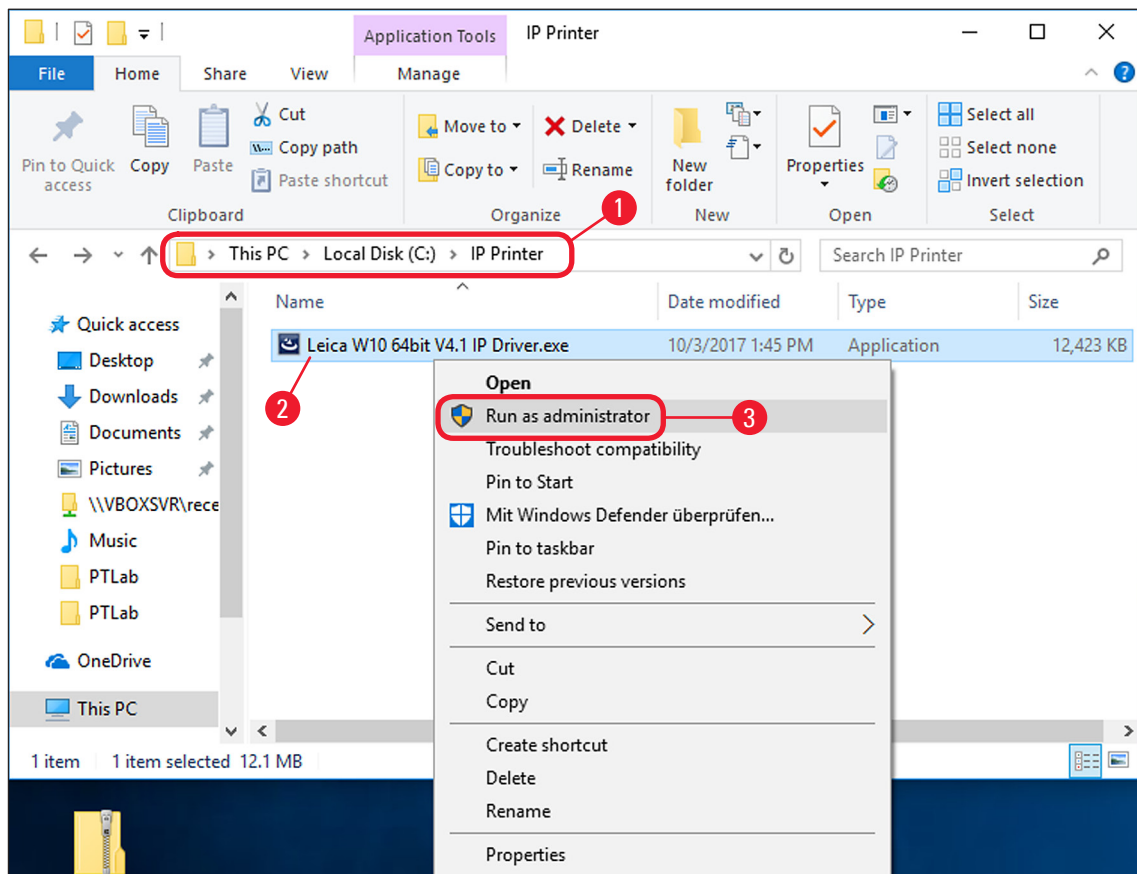


Fig. 13

3. The InstallShield Wizard is now extracting the required installation files (→ Fig. 14-1).
4. To abort the installation, press **Cancel** (→ Fig. 14-2).
5. To confirm having the InstallShield Wizard perform the installation, click **Next**. (→ Fig. 14-3).

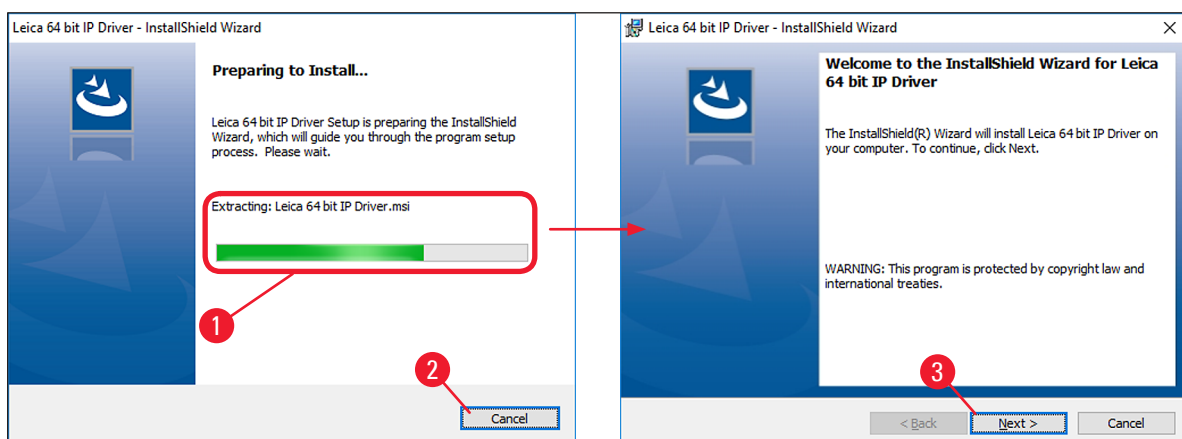


Fig. 14

6. The following message box shows the **License Agreement**. Read it carefully, select **I accept the terms in the license agreement** (→ Fig. 15-1) and click **Next** (→ Fig. 15-2).



**Note**

If **I do not accept the terms in the license agreement** is selected, the driver will not be installed.

- In the next step, confirm the installation on drive **C:\** (→ Fig. 15-3) by clicking **Next** (→ Fig. 15-4).

**Warning**

Do not alter the installation path!

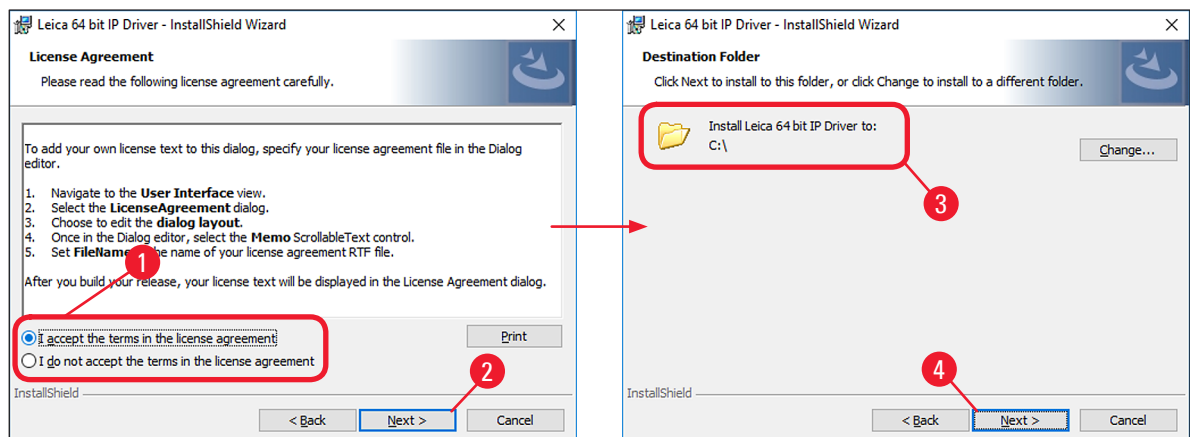


Fig. 15

- Click on **Install** (→ Fig. 16-1) to start the installation process. The installation process may take several minutes (→ Fig. 16-2).

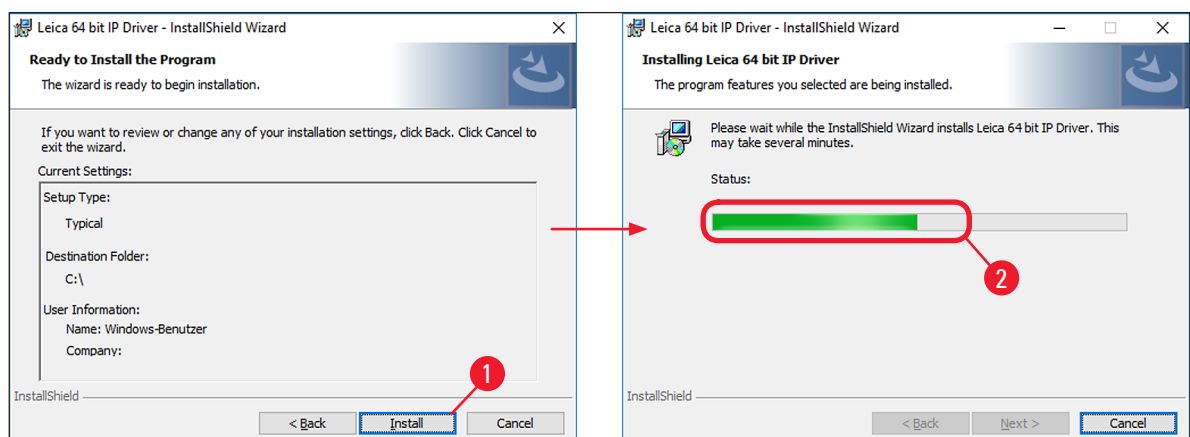


Fig. 16

- Once the installation is finished, click **Finish** (→ Fig. 17-1) to close the InstallShield Wizard (→ Fig. 17).

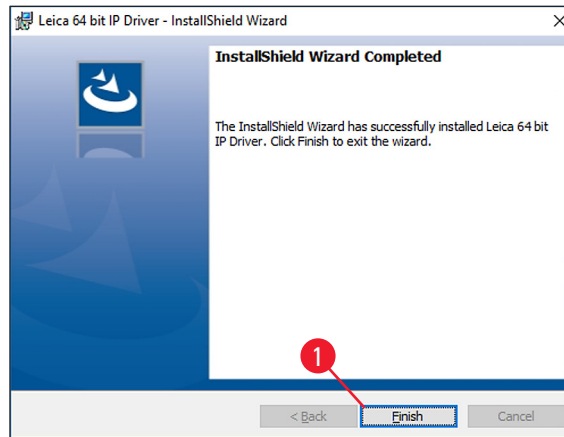


Fig. 17

**Note**

After successful installation of the driver, installation of the printer begins automatically. Continue with the installation with (→ p. 18 – 4.4 Install the printer).

**4.4 Install the printer****Warning**

The installation of the printer cannot be carried out without previous installation of the printer directory.

**Note**

Installation step 3 starts (→ p. 5 – 1.2 Overview) automatically after the printer directory has been created in installation step 2.

1. The **Add a device** (→ Fig. 18) menu appears. Click **The printer that I want isn't listed** (→ Fig. 18-1).

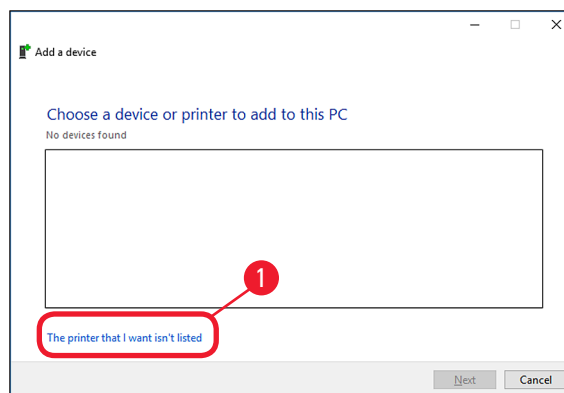


Fig. 18

2. In the next menu, select **Add a local printer or network printer with manual settings** (→ Fig. 19-1) and click **Next** (→ Fig. 19-2).
3. Select **Use an existing port** (→ Fig. 19-3) in the following menu and click on the drop down menu.
4. Choose **COM3: (Serial Port)** (→ Fig. 19-4) in the list and click **Next** (→ Fig. 19-5).

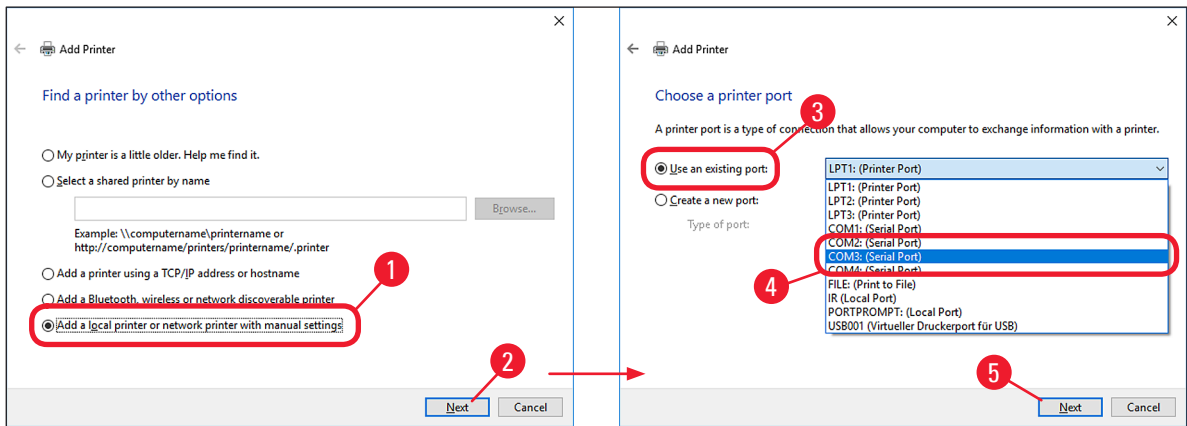


Fig. 19



**Note**

The IP C/IP S printers have to be installed on a free COM port. A suitable COM port can be found under **System\Control Panel\Device Manager** under Ports (COM & LPT1). If an RS-232 port is lacking, a tested USB to RS-232 converter (serial to USB) must be installed. This adapter is not available in the printer's scope of delivery and has to be purchased from a specialist shop.

5. Click **Have Disk...** (→ Fig. 20-1) and then click **Browse** (→ Fig. 20-2) in the following **Install From Disk** (→ Fig. 20-3) menu.



**Warning**

**NEVER** select an IP C/IP S printer driver via the **Manufacturer** (→ Fig. 20-4) and/or **Printers** (→ Fig. 20-5) selection fields, because the outdated versions can also be shown here and selected.

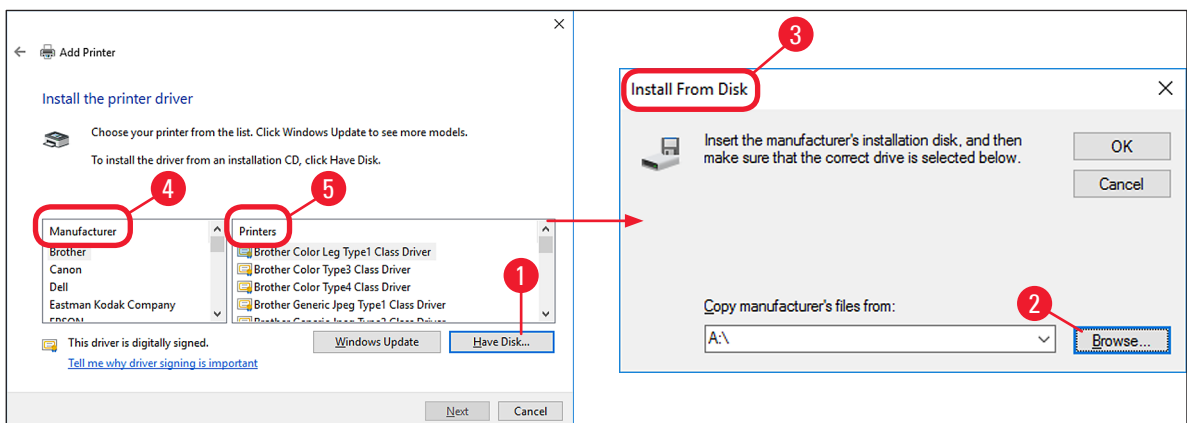


Fig. 20

## 4 Install the IP printer driver and help files

6. Navigate to the folder **C:\CSPrinter\...** (→ Fig. 21-1) on your hard disk to install the 64-bit driver or the 32-bit driver for your operating system.
7. Select the **ip.inf** (→ Fig. 21-2) driver file (1) and confirm the selection by clicking **Open** (→ Fig. 21-3).

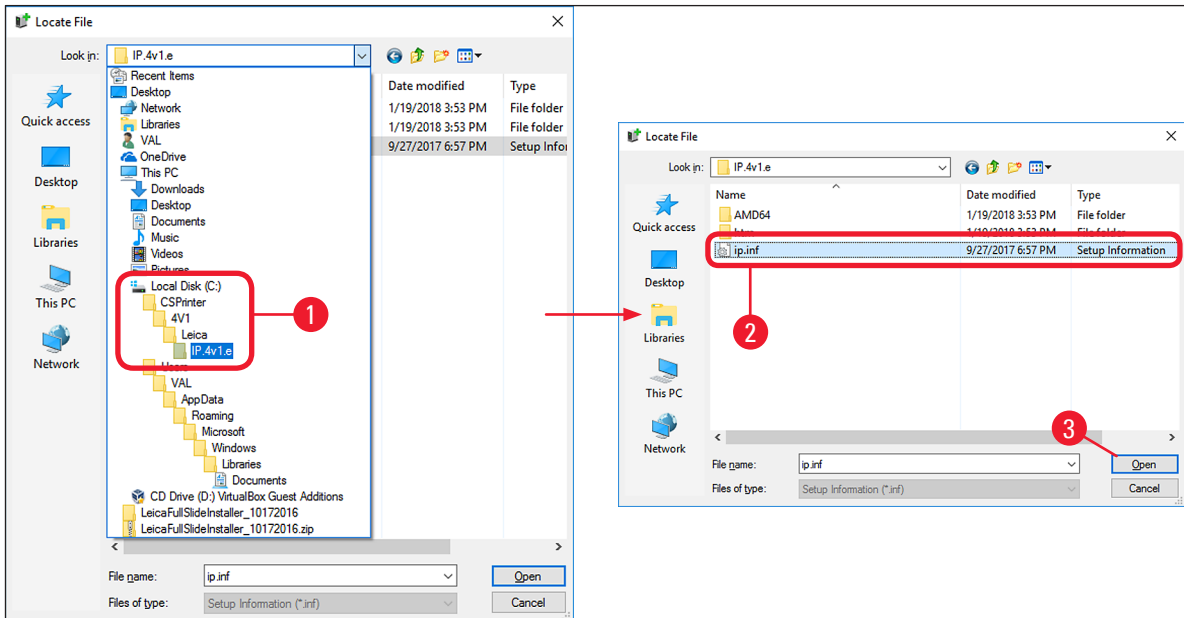


Fig. 21

8. After selecting the file (→ Fig. 22-2), click on **OK** (→ Fig. 22-1) in the **Install From Disk** menu.

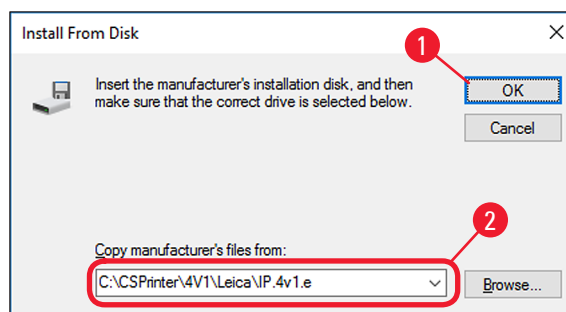


Fig. 22

9. Select the IP printer to be installed (**IP-C** or **IP-S**) (→ Fig. 23-1) and confirm your selection by clicking **Next** (→ Fig. 23-2).



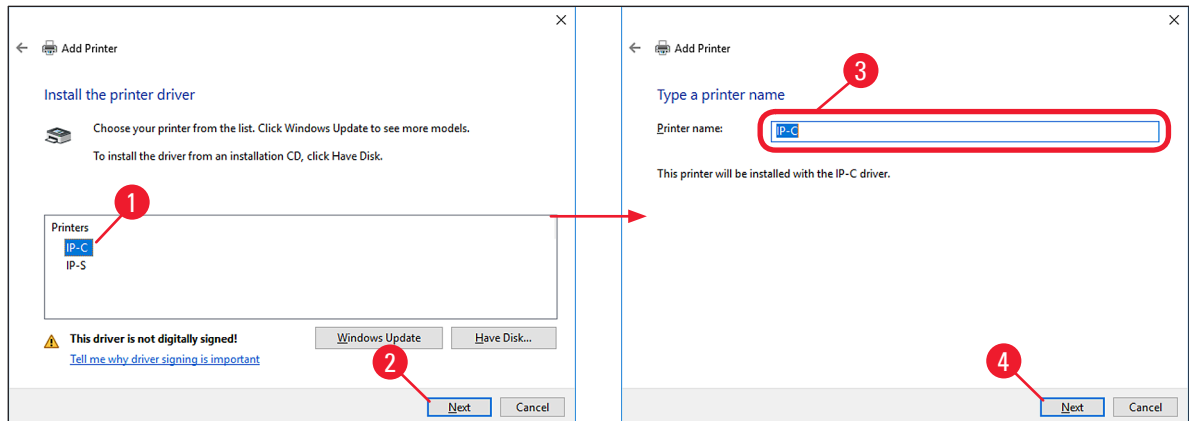
### Note

If multiple IP printers are to be operated on a computer, the respective driver for these printers must also be installed under **Control Panel\Hardware and Sound\Devices and Printers\Add a printer by selecting** (→ Fig. 6) **Add a local printer or network printer with manual settings** (→ Fig. 19-2).

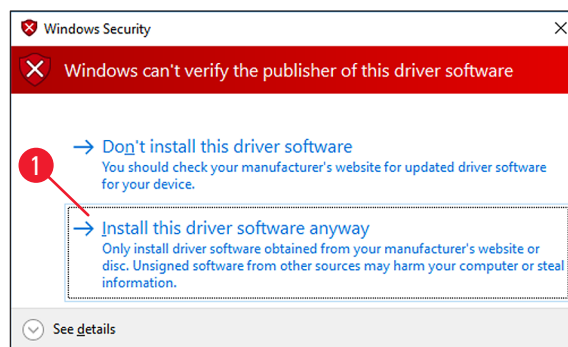
10. Use the suggested printer name (for example, IP-C) (→ Fig. 23-3) and confirm the selection with **Next** (→ Fig. 23-4).

**Note**

If multiple IP C printers are installed, IP-C 1 or IP-C 2, for example, can be entered here (→ Fig. 23-3).

**Fig. 23****Note**

The first time an IP printer is installed, a security message might appear (→ Fig. 24). To start the installation, confirm the Windows security message by clicking **Install this driver software anyway** (→ Fig. 24-1).

**Fig. 24**

11. After the installation has been successfully completed, the **Printer Sharing** (→ Fig. 25-1) dialog appears. Select the **Do not share this printer** (→ Fig. 25-2) option and confirm your selection by clicking **Next** (→ Fig. 25-3).
12. Click **Print a test page** (→ Fig. 25-4) to test whether communication between the computer and printer functions properly.

## 4 Install the IP printer driver and help files



### Note

Due to the size of the printable surface of a specimen slide or a cassette, no printout will be discernible. The test print merely indicates that the connection between printer and computer has been set up correctly.

13. Click **Finish** (→ Fig. 25-5) to complete the installation.

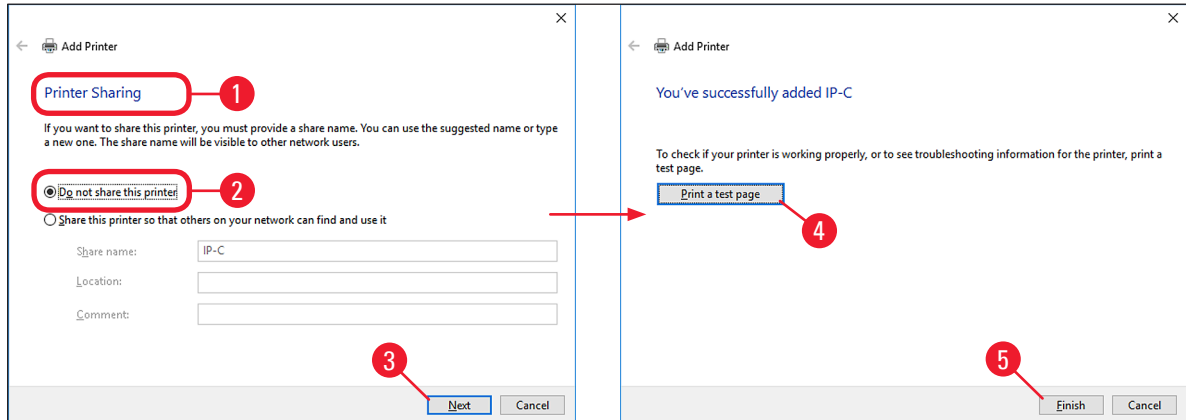


Fig. 25

14. Close all applications and restart the computer.



### Note

Select the **Set as the default printer** option (→ Fig. 26-1) only if no other printer is operated on this computer.

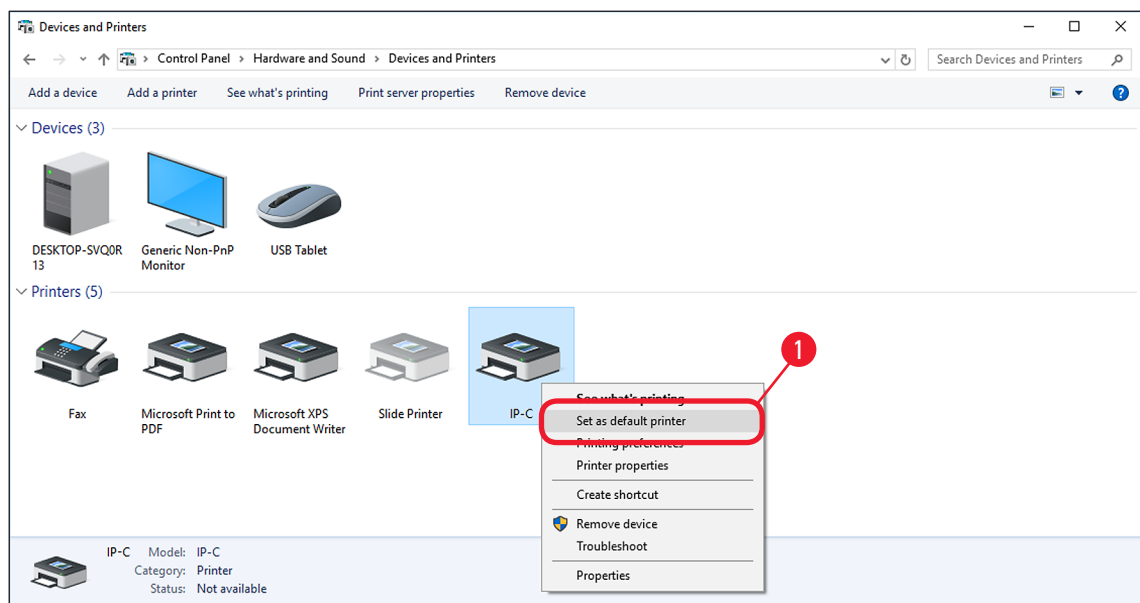


Fig. 26

## 5. Verify installation

### 5.1 Version check



#### Note

It is mandatory to verify that the correct IP printer driver version has been installed after the restart of the computer.

To verify the installation, proceed as follows:

1. Browse to **Control Panel\Hardware and Sound\Devices and Printers** (→ Fig. 27-1).
2. Mark the installed IP printer (for example IP-C) with a single left click (→ Fig. 27-2).
3. Click on **Print server properties** (→ Fig. 27-3).

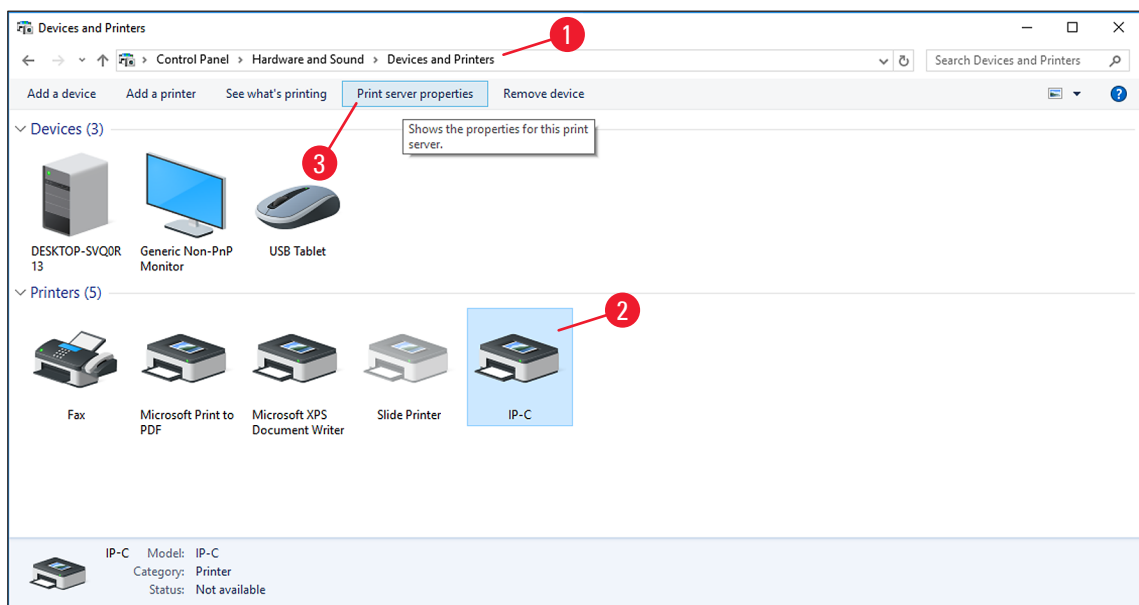


Fig. 27

4. In the **Print Server Properties** menu (→ Fig. 28-1), select the **Drivers** tab (→ Fig. 28-2), select the **IP-C** printer just installed (→ Fig. 28-3) and click **Properties** (→ Fig. 28-4).

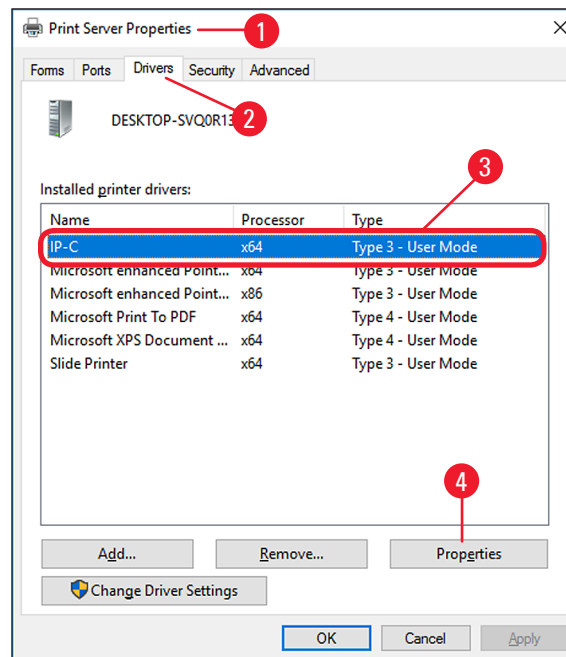


Fig. 28

5. Select the **Dependent File csprt.DLL** (→ Fig. 29-2) in the **Driver Properties** (→ Fig. 29-1).
6. Open the file by clicking **Properties** (→ Fig. 29-3).

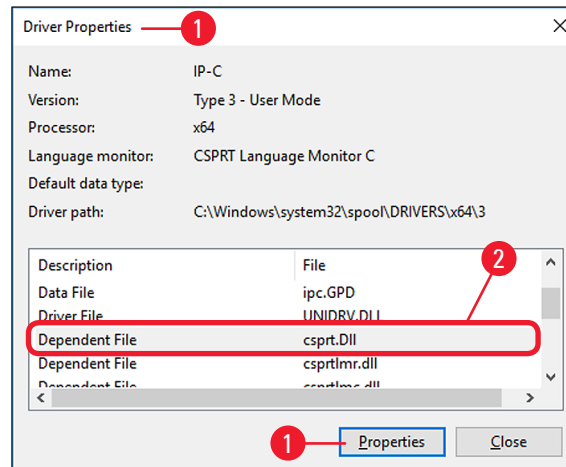


Fig. 29

7. In the **csprt.DLL Properties** (→ Fig. 30-1), select the **Details** tab (→ Fig. 30-2). The installed **Product version** (→ Fig. 30-3) of the Windows 10 64-bit driver must be displayed as Version 4.1.0.0 (2). If the Windows 10 32-bit driver was installed, the correct File version is 4.0.0.0.

**Note**

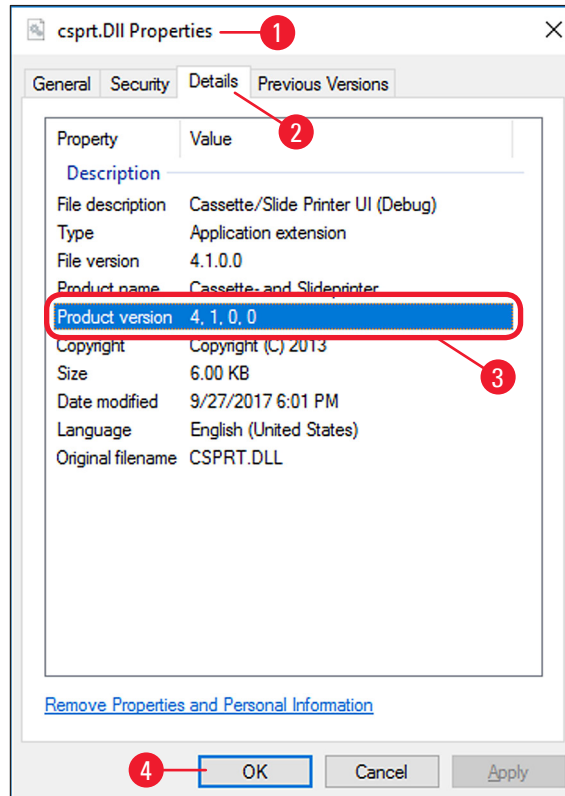
If the driver was installed on a Windows 8.1 operation system, the driver version displayed should be Version 3.1.0.0 for Windows 8.1 64-bit (2). If the Windows 8.1 32-bit driver was installed, the correct File version is 3.0.0.0.



**Warning**

If any other version than those listed above is displayed, the driver has to be uninstalled and reinstalled.

8. If the corresponding driver was correctly installed, close the **csprt.DLL Properties** window by clicking **OK** (→ Fig. 30-4).

**Fig. 30**

9. Close all windows that are still open to return to the desktop.

## Note

---



[www.LeicaBiosystems.com](http://www.LeicaBiosystems.com)



Leica Biosystems Nussloch GmbH  
Heidelberger Str. 17 - 19  
69226 Nussloch  
Germany

Tel.: +49 - (0) 6224 - 143 0  
Fax: +49 - (0) 6224 - 143 268  
Web: [www.LeicaBiosystems.com](http://www.LeicaBiosystems.com)