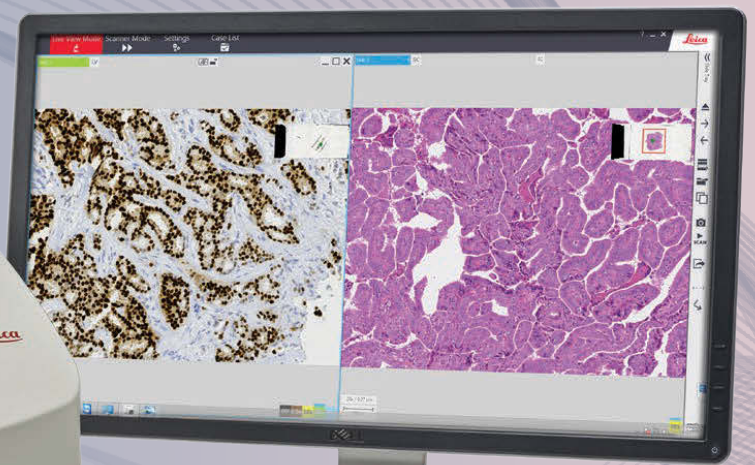


INTEGRATED LIVE VIEW AND DESKTOP SCANNER

APERIO LV1 REMOTE LIVE VIEW AND SLIDE SCANNING

Remote-controlled live view



Whole slide
desktop scanner

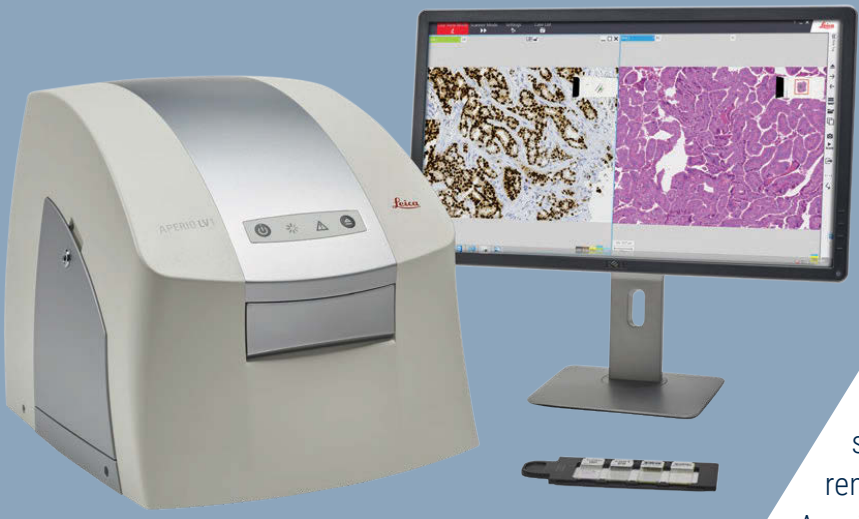


For research use only. Not for use in Diagnostic procedures.

Advancing Cancer Diagnostic
Improving Lives

Leica
BIO SYSTEMS


REMOTE LIVE VIEW + DESKTOP WHOLE SLIDE SCANNING IN ONE SYSTEM



The Aperio LV1 is a compact, economic solution for users looking to adopt Digital Pathology. The small footprint and compact design makes the Aperio LV1 an ideal desktop scanner. With minimal IT requirements and rapid implementation, your Aperio LV1 can be installed in minutes. High-resolution, whole slide scanning, plus the added ability for remote live view of slides, ensures the Aperio LV1 delivers affordable versatility for your laboratory; helping you to deliver results faster.

*Requires at least a 50 megabit per second (mbps) internet connection using Team Viewer software (v10 and Aperio LV1 console software (v4.0) with one slide loaded in the slide tray. 15 second clock starts once the Team Viewer password is entered and "Log On" is selected.

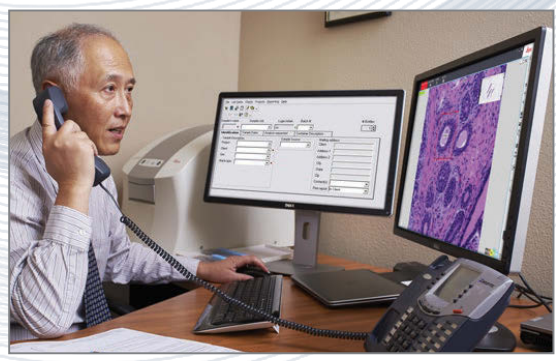
The Aperio LV1 runs on the Microsoft Windows 10 operating system.

VIEW SLIDES REMOTELY IN
15 
SECONDS OR LESS*

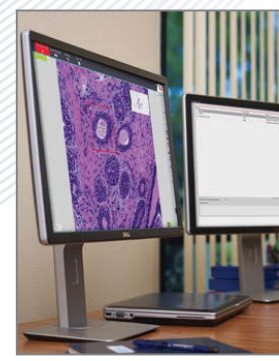
Key Applications



Education: Live teaching sessions with up to 16 different simultaneous slide views.



Telepathology: Easily load slides and begin a live sharing session.



Remote Access: Remote navigation control of slides.

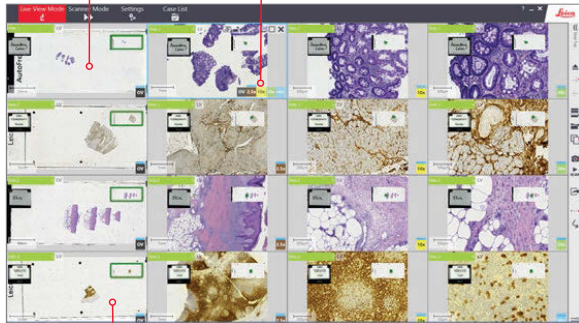
For Research Use Only. Not For Use In Diagnostic Procedures.

Live View Mode



Up to 16 simultaneous live views to compare same or different slides

Change magnification



Switch between or add slides

Clone views
Take snapshots

Add annotations or notes

Remotely navigate in x, y or z planes

- » Remote access to slides in 15 seconds or less
- » Easily select a live slide region to scan
- » View slides simultaneously at 2.5x, 10x, 20x, or 40x
- » Control slide movement and magnification remotely
- » Intuitive interface, including illumination controls
- » Up to 16 simultaneous live views for multiple regions of the same slide

Scanner Mode



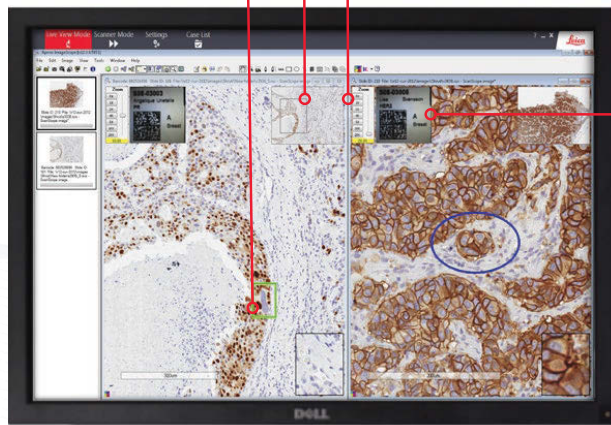
- » Compact & economic desktop scanner
- » 4 slide capacity with barcode support
- » Scan & view at 2.5x, 10x, 20x or 40x*
- » Integrated with Aperio eSlide Manager
- » Easily scan up to 5 z-stack layers
- » Intuitive design and 1-touch scanning

Easy to annotate areas of interest

Quickly zoom in or out

Split screen for multiple image viewing

View slide label



View images in Aperio ImageScope



note sharing, focus & live slide images.



Research: Investigate biomarkers, tissue morphology, cell inflammation and more.



Archive: Scan and store a permanent digital copy of your slides in minutes.

*40x digital zoom for viewing only

APERIO LV1

Objective Lens:
1.25x, 5x, & 20x
EC Plan-Neofluar®

Live view:
View slides in
15 seconds or less

Resolution:
Live view and
scanned images:
10x = 0.54 µm/pixel
20x = 0.27 µm/pixel
40x = 0.138 µm/pixel

White light LED
Köhler illumination

Dimensions (HxWxD):
17.9 x 15.9 x 20.5 (inches)
45.5 x 40.5 x 52 (cm)
Weight: 77.2 lbs. (35kg)

Scan speed
90 sec/slide, 15mm x15mm,
at 0.27 µm/pixel (20x) and
180 sec/slide, 15mm x15mm,
at 0.138 µm/pixel (40x)

1 and 2D barcode
recognition

4 slide capacity

Low profile workstation
with minimum 2TB image
storage capacity

Leica Biosystems is an international company with a strong network of worldwide customer services. For detailed contact information on your nearest sales office or distributor please visit our website: LeicaBiosystems.com

LeicaBiosystems.com/AperioLV1

For Research Use Only. Not For Use In Diagnostic Procedures.

Advancing Cancer Diagnostic
Improving Lives

