

ViewRNA eZ Assays from Affymetrix + BOND RX from Leica Biosystems

Easily translate genes into results. Quickly detect any target RNA *in situ* from FFPE tissue with the fully automated ViewRNA eZ Assays from Affymetrix on Leica Biosystems' BOND RX instrument.



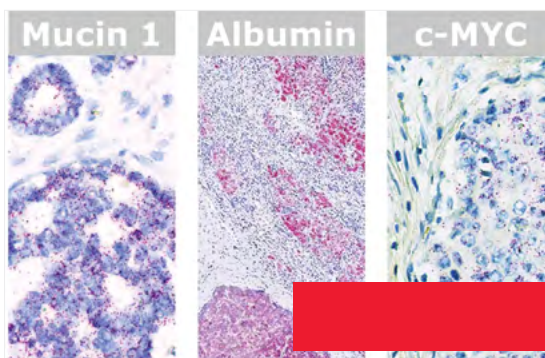
More choices
Flexible research solutions

Under 1 week for Affymetrix to deliver any probe.



More time
Efficient resource utilization

Just 1 hour of hands-on time.



More confidence
Trusted results

The most sensitive and specific assay available.



Easy, Fast, Fully Automated RNA ISH

For Research Use Only. Not for use in diagnostic procedures.

ViewRNA eZ Assays from Affymetrix + BOND RX from Leica Biosystems

Easy, Fast, Fully Automated RNA ISH Assays

Reduce hands-on time



Prepare slides and reagents



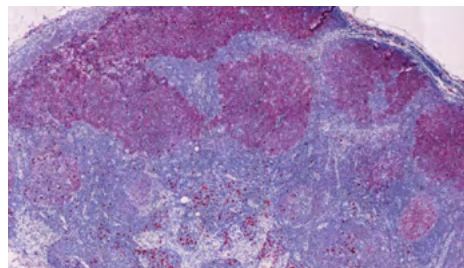
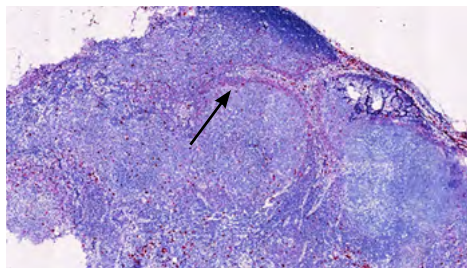
Stain on BOND RX



Apply coverslip and assess

- » Walk-away automation – less than 1 hour hands on time
- » High throughput and productivity — with seamless integration into current pathology workflows
- » Stain FFPE and frozen sections with protocols providing exceptional flexibility for both FFPE and frozen sections

Trusted results

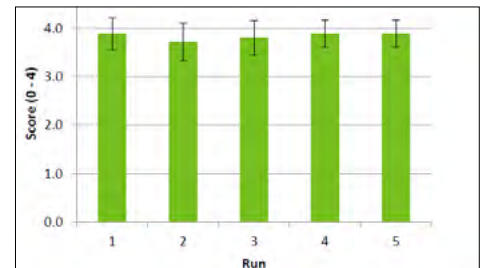


Demonstration of clonality changes in lymphocytes within lymph nodes: Follicular architecture of lymph node with IGLC clonality and loss of IGKC clonality (retrospective study of confirmed follicular lymphoma) showing predominance of IGLC-staining lymphocytes (lighter stain cells-right hand image) over IGKC-staining lymphocytes (left hand image). Note: the mantle zone shows presence of normal non-clonal B-lymphocytes (arrow).

- » Remarkable reproducibility from slide-to-slide, run-to-run, operator-to-operator and site-to-site
- » High quality staining enables a clear distinction between real staining and artifacts
- » Market leading sensitivity and specificity to accurately visualize the expression level from your gene of interest within the morphological context

"I recently tried the new ViewRNA eZ Assays on our BOND RX and found that the sensitivity and specificity of staining was remarkable. These new assays are easy to run and hands-free from tissue processing to cover-slipping. [ViewRNA eZ Assays] will be our standard for in situ hybridization studies going forward."

Dr. Paul Shugrue Ph.D., Prothema



Remarkable Reproducibility

Spp-1 in rat kidney
Each run of 9 slides scored blind by three readers
Each run performed on a different day

BOND RX is available from Leica Biosystems.
Contact Leica Biosystems for more information and ordering: LeicaBiosystems.com

ViewRNA eZ Assays are available from Affymetrix.
Contact Affymetrix for more information and ordering:
www.affymetrix.com/viewrna-ez

For Research Use Only. Not for use in diagnostic procedures.

Copyright © 2016 by Leica Biosystems Melbourne Pty Ltd, Melbourne, Australia.
LEICA and the Leica Logo are registered trademarks of Leica Microsystems IR GmbH.
BOND is a trademark of Leica Biosystems Melbourne Pty. Ltd. All rights reserved.
Other logos, product and/or company names might be trademarks of their respective owners.

95.12830 Rev B - 04/2016